

Datasheet for ABIN1311086
MMP3 Protein (AA 22-131) (GST tag)



[Go to Product page](#)

1 Image

Overview

Quantity:	10 µg
Target:	MMP3
Protein Characteristics:	AA 22-131
Origin:	Human
Source:	Wheat germ
Protein Type:	Recombinant
Purification tag / Conjugate:	This MMP3 protein is labelled with GST tag.
Application:	Western Blotting (WB), ELISA, Affinity Purification (AP), Antibody Array (AA)

Product Details

Purpose:	MMP3 (Human) Recombinant Protein (Q01)
Sequence:	GAARGEDTSM NLVQKYLENY YDLKKDVKQF VRRKDSGPVW KKIREMQKFL GLEVTGKLDS DTLEVMRKPR CGVPDVGHFR TFPGIPKWRK THLTYRIVNY TPDLPKDAVD
Characteristics:	Human MMP3 partial ORF (NP_002413, 22 a.a. - 131 a.a.) recombinant protein with GST-tag at N-terminal.
Purification:	in vitro wheat germ expression system

Target Details

Target:	MMP3
Alternative Name:	MMP3 (MMP3 Products)

Target Details

Background:	Full Gene Name: matrix metallopeptidase 3 (stromelysin 1, progelatinase) Synonyms: CHDS6,MGC126102,MGC126103,MGC126104,MMP-3,SL-1,STMY,STMY1,STR1
Gene ID:	4314
NCBI Accession:	NM_002422

Application Details

Application Notes:	Optimal working dilution should be determined by the investigator.
Comment:	Preparation method: in vitro, wheat germ expression system Product Quality tested by: 12.5% SDS-PAGE Stained with Coomassie Blue.
Restrictions:	For Research Use only

Handling

Buffer:	50 mM Tris-HCl, 10 mM reduced Glutathione, pH =8.0 in the elution buffer.
Handling Advice:	Aliquot to avoid repeated freezing and thawing.
Storage:	-80 °C
Storage Comment:	Best use within three months from the date of receipt of this protein.

Images

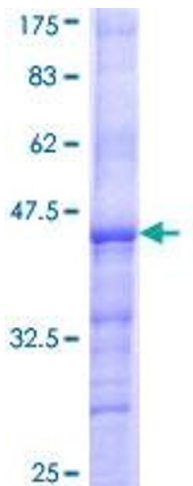


Image 1.