



[Go to Product page](#)

Datasheet for ABIN1311100

Meningioma 1 Protein (AA 1212-1320) (GST tag)

1 Image

Overview

Quantity:	10 µg
Target:	Meningioma 1 (MN1)
Protein Characteristics:	AA 1212-1320
Origin:	Human
Source:	Wheat germ
Protein Type:	Recombinant
Purification tag / Conjugate:	This Meningioma 1 protein is labelled with GST tag.
Application:	ELISA, Western Blotting (WB), Affinity Purification (AP), Antibody Array (AA)

Product Details

Purpose:	MN1 (Human) Recombinant Protein (Q01)
Sequence:	STIDLDSLMA EHSAAWYMPA DKALVDSADD DKTLAPWEKA KPQNPNKEA HDLPANKASA SQPGSHLQCL SVHCTDDVDG AKARASVPTW RSLHSDISNR FGTFVAALT
Characteristics:	Human MN1 partial ORF (NP_002421, 1212 a.a. - 1320 a.a.) recombinant protein with GST-tag at N-terminal.
Purification:	in vitro wheat germ expression system

Target Details

Target:	Meningioma 1 (MN1)
Alternative Name:	MN1 (MN1 Products)

Target Details

Background:	Full Gene Name: meningioma (disrupted in balanced translocation) 1 Synonyms: MGCR,MGCR1,MGCR1-PEN,dJ353E16.2
Gene ID:	4330
NCBI Accession:	NM_002430

Application Details

Application Notes:	Optimal working dilution should be determined by the investigator.
Comment:	Preparation method: in vitro, wheat germ expression system Product Quality tested by: 12.5% SDS-PAGE Stained with Coomassie Blue.
Restrictions:	For Research Use only

Handling

Buffer:	50 mM Tris-HCl, 10 mM reduced Glutathione, pH =8.0 in the elution buffer.
Handling Advice:	Aliquot to avoid repeated freezing and thawing.
Storage:	-80 °C
Storage Comment:	Best use within three months from the date of receipt of this protein.

Images

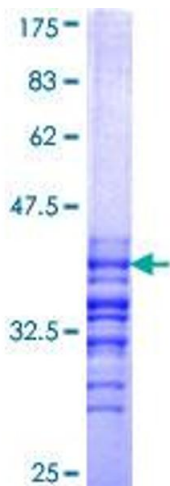


Image 1.