



[Go to Product page](#)

Datasheet for ABIN1311125

MOBKL2B Protein (AA 1-216) (GST tag)

1 Image

Overview

Quantity:	10 µg
Target:	MOBKL2B (MOB3B)
Protein Characteristics:	AA 1-216
Origin:	Human
Source:	Wheat germ
Protein Type:	Recombinant
Purification tag / Conjugate:	This MOBKL2B protein is labelled with GST tag.
Application:	ELISA, Western Blotting (WB), Affinity Purification (AP), Antibody Array (AA)

Product Details

Purpose:	MOBKL2B (Human) Recombinant Protein (P01)
Sequence:	MSIALKQVFN KDKTFRPKRK FEPGTQRFEL HKRAQASLNS GVDLKAHVQL PSGEDQNDWV AVHVVDFFNR INLIYGTICE FCTERTCPVM SGGPKYEYRW QDDLKYKKPT ALPAPQYMNL LMDWIEVQIN NEEIFPTCVG VPFKPNFLQI CKKILCRLFR VVHVYIHHF DRVIVMGAEA HVNTCYKHFY YFVTEMNLID RKELEPLKEM TSRMCH
Characteristics:	Human MOBKL2B full-length ORF (NP_079037.3, 1 a.a. - 216 a.a.) recombinant protein with GST-tag at N-terminal.
Purification:	in vitro wheat germ expression system

Target Details

Target:	MOBKL2B (MOB3B)
---------	-----------------

Target Details

Alternative Name:	MOBKL2B (MOB3B Products)
Background:	Full Gene Name: MOB1, Mps One Binder kinase activator-like 2B (yeast) Synonyms: FLJ13204,FLJ23916,MGC32960,MOB3B
Gene ID:	79817
NCBI Accession:	NM_024761

Application Details

Application Notes:	Optimal working dilution should be determined by the investigator.
Comment:	Preparation method: in vitro, wheat germ expression system Product Quality tested by: 12.5% SDS-PAGE Stained with Coomassie Blue.
Restrictions:	For Research Use only

Handling

Buffer:	50 mM Tris-HCl, 10 mM reduced Glutathione, pH =8.0 in the elution buffer.
Handling Advice:	Aliquot to avoid repeated freezing and thawing.
Storage:	-80 °C
Storage Comment:	Best use within three months from the date of receipt of this protein.

Images

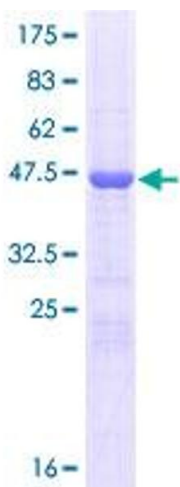


Image 1.