

Datasheet for ABIN1311153

## MON1A Protein (AA 1-555) (GST tag)



[Go to Product page](#)

### 1 Image

#### Overview

Quantity:	10 µg
Target:	MON1A
Protein Characteristics:	AA 1-555
Origin:	Human
Source:	Wheat germ
Protein Type:	Recombinant
Purification tag / Conjugate:	This MON1A protein is labelled with GST tag.
Application:	ELISA, Western Blotting (WB), Affinity Purification (AP), Antibody Array (AA)

#### Product Details

Purpose:	MON1A (Human) Recombinant Protein (P01)
Sequence:	MATDMQRKRS SECLDGLTLP SDGQSMERAE SPTPGMAQGM EPGAGQEGAM FVHARSYEDL TESEDGAASG DSHKEGTRGP PPLPTDMRQI SQDFSELSTQ LTGVARDLQE EMLPGSSEDW LEPPGAVGRP ATEPPREGTT EGDEEDATEA WRLHQKHV FV LSEAGKPVYS RYGSEEALSS TMGVMVALVS FLEADKNAIR SIHADGYKVV FVRRSPLVLV AVARTRQSAQ ELAQELLYIY YQILSLLTGA QLSHIFQQKQ NYDLRRLLSG SERITDNLLQ LMARDPSFLM GAARCLPLAA AVRDTVSA SL QQARARSLVF SILLARNQLV ALVRRKDQFL HPIDLHLLFN LISSSSSFRE GEAWTPVCLP KFNAAGFFHA HISYLEPDTD LCLLLVSTDR EDFFAVSDCR RRFQERLRKR GAHLALREAL RTPYY SVAQV GIPDLRHFLY KSKSSGLFTS PEIEAPYTSE EEQERLLGLY QYLH SRAHNA SRPLKTIYYT GPNENLLAWV TGAFELYMCY SPLGTKASAV SAIHKLMRWI RKEEDRLFIL TPLTY
Characteristics:	Human MON1A full-length ORF ( NP_115731.1, 1 a.a. - 555 a.a.) recombinant protein with GST-

## Product Details

---

tag at N-terminal.

Purification: in vitro wheat germ expression system

## Target Details

---

Target: MON1A

Alternative Name: MON1A ([MON1A Products](#))

Background: Full Gene Name: MON1 homolog A (yeast)  
Synonyms: FLJ97088,MGC13272,SAND1

Gene ID: 84315

NCBI Accession: [NM\\_032355](#)

Pathways: [Transition Metal Ion Homeostasis](#)

## Application Details

---

Application Notes: Optimal working dilution should be determined by the investigator.

Comment: Preparation method: in vitro, wheat germ expression system  
Product Quality tested by: 12.5% SDS-PAGE Stained with Coomassie Blue.

Restrictions: For Research Use only

## Handling

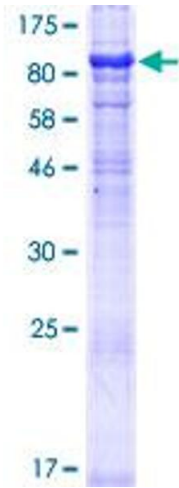
---

Buffer: 50 mM Tris-HCl, 10 mM reduced Glutathione, pH =8.0 in the elution buffer.

Handling Advice: Aliquot to avoid repeated freezing and thawing.

Storage: -80 °C

Storage Comment: Best use within three months from the date of receipt of this protein.



**Image 1.**