

Datasheet for ABIN1311155

## MON1B Protein (AA 1-547) (GST tag)



[Go to Product page](#)

### 1 Image

#### Overview

Quantity:	10 µg
Target:	MON1B
Protein Characteristics:	AA 1-547
Origin:	Human
Source:	Wheat germ
Protein Type:	Recombinant
Purification tag / Conjugate:	This MON1B protein is labelled with GST tag.
Application:	ELISA, Western Blotting (WB), Affinity Purification (AP), Antibody Array (AA)

#### Product Details

Purpose:	MON1B (Human) Recombinant Protein (P01)
Sequence:	MEVGGDTAAP APGGAEDLED TQFPSEEARE GGGVHAVPPD PEDEGLEETG SKDKDQPPSP SPPPQSEALS STSRLWSPAA PENSPTCSPE SSSGGQGGDP SDEEWRSQRK HVFVLSEAGK PIYSRYGSVE ALSATMGVMT ALVSFVQSAG DAIRAIYAED HKLVFLQQGP LLLVAMSRTS QSAAQLRGEL LAVHAQIVST LTRASVARIF AHKQNYDLRR LLAGSERTLD RLLDSMEQDP GALLLGAVRC VPLARPLRDA LGALLRRCTA PGLALSVLAV GGRLITAAQE RNVLAECRLD PADLQLLLDW VGAPAF AAGE AWAPVCLPRF NPDGFFYAYV ARLDAMPVCL LLLGTQREAF HAMAACRRLV EDGMHALGAM RALGEAASFS NASSASAPAY SVQAVGAPGL RHFLYKPLDI PDHHRQLPQF TSPELEAPYS REEERQLSD LYHRLHARLH STSRPLRLIY HVAEKETLLA WVTSKFELYT CLSPLVTKAG AILVVTKLLR WVKKEEDRLF IRYPPKYSTP PATSTDQAAH NGLFTGL
Characteristics:	Human MON1B full-length ORF ( NP_055755.1, 1 a.a. - 547 a.a.) recombinant protein with GST-

## Product Details

---

tag at N-terminal.

Purification: in vitro wheat germ expression system

## Target Details

---

Target: MON1B

Alternative Name: MON1B ([MON1B Products](#))

Background: Full Gene Name: MON1 homolog B (yeast)  
Synonyms: HSRG1,SAND2

Gene ID: 22879

NCBI Accession: [NM\\_014940](#)

## Application Details

---

Application Notes: Optimal working dilution should be determined by the investigator.

Comment: Preparation method: in vitro, wheat germ expression system  
Product Quality tested by: 12.5% SDS-PAGE Stained with Coomassie Blue.

Restrictions: For Research Use only

## Handling

---

Buffer: 50 mM Tris-HCl, 10 mM reduced Glutathione, pH =8.0 in the elution buffer.

Handling Advice: Aliquot to avoid repeated freezing and thawing.

Storage: -80 °C

Storage Comment: Best use within three months from the date of receipt of this protein.

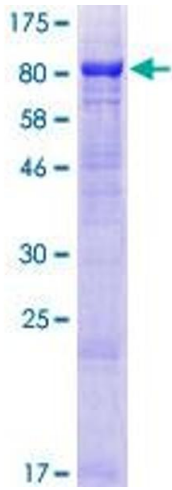


Image 1.