



[Go to Product page](#)

Datasheet for ABIN1311157

MON1B Protein (AA 331-430) (GST tag)

1 Image

Overview

Quantity:	10 µg
Target:	MON1B
Protein Characteristics:	AA 331-430
Origin:	Human
Source:	Wheat germ
Protein Type:	Recombinant
Purification tag / Conjugate:	This MON1B protein is labelled with GST tag.
Application:	ELISA, Western Blotting (WB), Affinity Purification (AP), Antibody Array (AA)

Product Details

Purpose:	MON1B (Human) Recombinant Protein (Q01)
Sequence:	NPDGFFYAYV ARLDAMPVCL LLLGTQREAF HAMAACRRLV EDGMHALGAM RALGEEAASF NASSASAPAY SVQAVGAPGL RHFLYKPLDI PDHHRQLPQF
Characteristics:	Human MON1B partial ORF (NP_055755.1, 331 a.a. - 430 a.a.) recombinant protein with GST-tag at N-terminal.
Purification:	in vitro wheat germ expression system

Target Details

Target:	MON1B
Alternative Name:	MON1B (MON1B Products)

Target Details

Background: Full Gene Name: MON1 homolog B (yeast)
Synonyms: HSRG1,SAND2

Gene ID: 22879

NCBI Accession: [NM_014940](#)

Application Details

Application Notes: Optimal working dilution should be determined by the investigator.

Comment: Preparation method: in vitro, wheat germ expression system
Product Quality tested by: 12.5% SDS-PAGE Stained with Coomassie Blue.

Restrictions: For Research Use only

Handling

Buffer: 50 mM Tris-HCl, 10 mM reduced Glutathione, pH =8.0 in the elution buffer.

Handling Advice: Aliquot to avoid repeated freezing and thawing.

Storage: -80 °C

Storage Comment: Best use within three months from the date of receipt of this protein.

Images

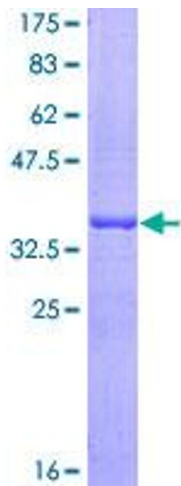


Image 1.