



[Go to Product page](#)

Datasheet for ABIN1311161

MORF4 Protein (AA 1-235) (GST tag)

1 Image

Overview

Quantity:	25 µg
Target:	MORF4
Protein Characteristics:	AA 1-235
Origin:	Human
Source:	Wheat germ
Protein Type:	Recombinant
Purification tag / Conjugate:	This MORF4 protein is labelled with GST tag.
Application:	Affinity Purification (AP), Antibody Array (AA), ELISA, Western Blotting (WB)

Product Details

Purpose:	MORF4 (Human) Recombinant Protein (P01)
Sequence:	MRWAAPGKKT SGLQQKNIEV KTKKNKQKTP GNGDGGSTSE TPQPPRKKRA QVDPTVENEE TFMNRVEVKV KIPEELKPWL VDDWDLITRQ KQLFYLPAAEK NVDSILEDYA NYKKSHGNTD NKEYAVNEVV AGIKEYFNLM LGTQLLNKFE RPQYAEILAD CPDAPMSQVY GVPHELLRLSV QIGAMLAYTP LNEKSLALLL NYLHDFLKYL AKNSATLFSA SDYEVALPEY HRKAV
Characteristics:	Human MORF4 full-length ORF (NP_006783.2, 1 a.a. - 235 a.a.) recombinant protein with GST-tag at N-terminal.
Purification:	in vitro wheat germ expression system

Target Details

Target:	MORF4
---------	-------

Target Details

Alternative Name:	MORF4 (MORF4 Products)
Background:	Full Gene Name: mortality factor 4 Synonyms: CSR,CSRB,SEN,SEN1
Gene ID:	10934
NCBI Accession:	NM_006792

Application Details

Application Notes:	Optimal working dilution should be determined by the investigator.
Comment:	Preparation method: in vitro, wheat germ expression system Product Quality tested by: 12.5% SDS-PAGE Stained with Coomassie Blue.
Restrictions:	For Research Use only

Handling

Buffer:	50 mM Tris-HCl, 10 mM reduced Glutathione, pH =8.0 in the elution buffer.
Handling Advice:	Aliquot to avoid repeated freezing and thawing.
Storage:	-80 °C
Storage Comment:	Best use within three months from the date of receipt of this protein.

Images

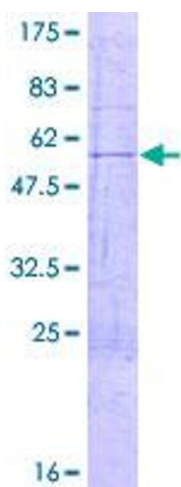


Image 1.