



[Go to Product page](#)

Datasheet for ABIN1311168

MORG1 Protein (AA 1-315) (GST tag)

1 Image

Overview

Quantity:	10 µg
Target:	MORG1 (wdr83)
Protein Characteristics:	AA 1-315
Origin:	Human
Source:	Wheat germ
Protein Type:	Recombinant
Purification tag / Conjugate:	This MORG1 protein is labelled with GST tag.
Application:	ELISA, Western Blotting (WB), Affinity Purification (AP), Antibody Array (AA)

Product Details

Purpose:	MORG1 (Human) Recombinant Protein (P01)
Sequence:	MAFPEPKPRP PELPQKRLKT LDCGQGAVRA VRFNVDGNYC LTCGSDKTLK LWNPLRGTLT RTYSGHGYEV LDAAGSFDNS SLCSGGGDKA VVLWDVASGQ VVRKFRGHAG KVNTVQFNEE ATVILSGSID SSIRCWDCRS RRPEPVQTLT EARDGVSSVK VSDHEILAGS VDGRVRRYDL RMGQLFSDYV GSPITCTCFS RDGQCTLVSS LDSTLRLLDK DTGELLGEYK GHKNQEYKLD CCLSERDTHV VSCSEDGKVF FWDLVEGALA LALPVGSGVV QSLAYHPTEP CLLTAMGGSV QCWREEAYEA EDGAG
Characteristics:	Human MORG1 full-length ORF (NP_115708.1, 1 a.a. - 315 a.a.) recombinant protein with GST-tag at N-terminal.
Purification:	in vitro wheat germ expression system

Target Details

Target:	MORG1 (wdr83)
Alternative Name:	MORG1 (wdr83 Products)
Background:	Full Gene Name: mitogen-activated protein kinase organizer 1 Synonyms: MGC4238
Gene ID:	84292
NCBI Accession:	NM_032332

Application Details

Application Notes:	Optimal working dilution should be determined by the investigator.
Comment:	Preparation method: in vitro, wheat germ expression system Product Quality tested by: 12.5% SDS-PAGE Stained with Coomassie Blue.
Restrictions:	For Research Use only

Handling

Buffer:	50 mM Tris-HCl, 10 mM reduced Glutathione, pH =8.0 in the elution buffer.
Handling Advice:	Aliquot to avoid repeated freezing and thawing.
Storage:	-80 °C
Storage Comment:	Best use within three months from the date of receipt of this protein.

Images

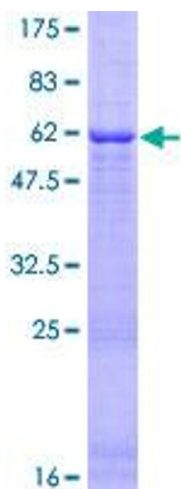


Image 1.