



[Go to Product page](#)

Datasheet for ABIN1311192

## MPHOSPH10 Protein (AA 348-457) (GST tag)

### 1 Image

#### Overview

Quantity:	10 µg
Target:	MPHOSPH10
Protein Characteristics:	AA 348-457
Origin:	Human
Source:	Wheat germ
Protein Type:	Recombinant
Purification tag / Conjugate:	This MPHOSPH10 protein is labelled with GST tag.
Application:	ELISA, Western Blotting (WB), Affinity Purification (AP), Antibody Array (AA)

#### Product Details

Purpose:	MPHOSPH10 (Human) Recombinant Protein (Q01)
Sequence:	NVKKNSDEVK SSFEKRQEKM NEKIASLEKE LLEKKPWQLQ GEVTAQKRPE NSLLEETLHF DHAVRMAPVI TEETTLQLED IIKQRIRDQA WDDVVRKEKP KEDAYEYKKR
Characteristics:	Human MPHOSPH10 partial ORF ( NP_005782, 348 a.a. - 457 a.a.) recombinant protein with GST-tag at N-terminal.
Purification:	in vitro wheat germ expression system

#### Target Details

Target:	MPHOSPH10
Alternative Name:	MPHOSPH10 ( <a href="#">MPHOSPH10 Products</a> )

## Target Details

Background:	Full Gene Name: M-phase phosphoprotein 10 (U3 small nucleolar ribonucleoprotein) Synonyms: MPP10,MPP10P
Gene ID:	10199
NCBI Accession:	<a href="#">NM_005791</a>
Pathways:	<a href="#">SARS-CoV-2 Protein Interactome</a> , <a href="#">The Global Phosphorylation Landscape of SARS-CoV-2 Infection</a>

## Application Details

Application Notes:	Optimal working dilution should be determined by the investigator.
Comment:	Preparation method: in vitro, wheat germ expression system Product Quality tested by: 12.5% SDS-PAGE Stained with Coomassie Blue.
Restrictions:	For Research Use only

## Handling

Buffer:	50 mM Tris-HCl, 10 mM reduced Glutathione, pH =8.0 in the elution buffer.
Handling Advice:	Aliquot to avoid repeated freezing and thawing.
Storage:	-80 °C
Storage Comment:	Best use within three months from the date of receipt of this protein.

## Images

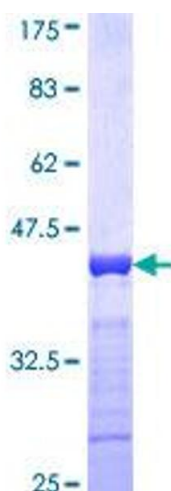


Image 1.