

Datasheet for ABIN1311200

MPHOSPH9 Protein (AA 1-1031) (GST tag)



[Go to Product page](#)

1 Image

Overview

Quantity:	10 µg
Target:	MPHOSPH9
Protein Characteristics:	AA 1-1031
Origin:	Human
Source:	Wheat germ
Protein Type:	Recombinant
Purification tag / Conjugate:	This MPHOSPH9 protein is labelled with GST tag.
Application:	ELISA, Western Blotting (WB), Affinity Purification (AP), Antibody Array (AA)

Product Details

Purpose:	MPHOSPH9 (Human) Recombinant Protein (P01)
Sequence:	MGFFSLSSER NESVIHYPES TEPEIQQEMS TSQPDCNVDS CSVSSGYGTF CISELNLYKS KDPKEFMEHI DVPKGQYVAP AVPAESLVDG VKNENFYIQT PEECHVSLKE DVSISPGEFE HNFLGENKVS EVYSGKTNSN AITSWAQKLG QNQPRAHVE DGGSRSKQGN EQSKKTPIEK SDFAAATHPR AFYLSKPDET PNAWMSDSGT GLTYWKLEEK DMHHSLPETL EKTFISLSST DVSPNQSNTS NEMKLPSLKD IYYKKQRENK QLPERNL TSA SNPNHPPEVL TLDPTLHMKP KQQISGIQPH GLPNALDDRI SFSPDSVLEP SMSSPSDIDS FSQASNVTSQ LPGFPHYPSH TKASPVDSWK NQTFQNESRT SSTFPSVYTI TSNDISVNTV DEENTVMVAS ASVSQSQLPG TANSVPECIS LTSLEDPVIL SKIRQNLKEK HARHIADLRA YYESEINSLK QKLEAKEISG VEDWKITNQI LVDRCGQLDS ALHEATSRVR TLENKNNLLE IEVNDLRERF SAASSASKIL QERIEEMRTS SKEKDNTIIR LKSRLQDLEE AFENAYKLS DKEAQLKQEN KMFQDLLGEY ESLGKEHRRV KDALNTTENK LLDAYTQISD LKRMISKLEA QVKQVEHENM LSLRHNSRIH

Product Details

VRPSRANTLA TSDVSRRKWL IPGAEYSIFT GQPLDTQDSN VDNQLEETCS LGHRSPLEKD
SSPGSSSTSL LIKKQRETS D TPIMRALKEL DEGKIFKNWG TQTEKEDTSN INPRQTETSV
NASRSPEKCA QQRQKRLNSA SQRSSSLPPS NRKSSTPTKR EIMLTPVTVVA YSPKRSPKEN
LSPGFSHLLS KNESSPIRFD ILLDDLDTVV VSTLQRTNPR KQLQFLPLDD SEEKTYSEKA
TDNHVNHSSC PEPVPNGVKK VSVRTAWEKN KSVSYEQCKP VSVTPQGND F EYTAKIRTLA
ETERFFDEL T KEKDQIEAAL SRMPSPGGRI TLQTRLNQEA LEDRLERINR ELGSVRMTLK
KFHVLRTSAN L

Characteristics: Human MPHOSPH9 full-length ORF (NP_073619.2, 1 a.a. - 1031 a.a.) recombinant protein with GST-tag at N-terminal.

Purification: in vitro wheat germ expression system

Target Details

Target: MPHOSPH9

Alternative Name: MPHOSPH9 ([MPHOSPH9 Products](#))

Background: Full Gene Name: M-phase phosphoprotein 9
Synonyms: DKFZp434J034,FLJ12954,MPP-9,MPP9

Gene ID: 10198

NCBI Accession: [NM_022782](#)

Application Details

Application Notes: Optimal working dilution should be determined by the investigator.

Comment: Preparation method: in vitro, wheat germ expression system
Product Quality tested by: 12.5% SDS-PAGE Stained with Coomassie Blue.

Restrictions: For Research Use only

Handling

Buffer: 50 mM Tris-HCl, 10 mM reduced Glutathione, pH =8.0 in the elution buffer.

Handling Advice: Aliquot to avoid repeated freezing and thawing.

Storage: -80 °C

Storage Comment: Best use within three months from the date of receipt of this protein.

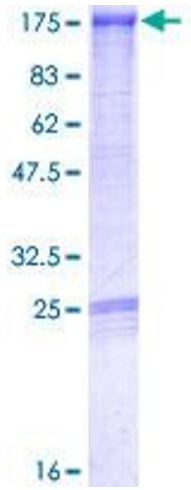


Image 1.