



Datasheet for ABIN1311202

MPHOSPH9 Protein (AA 922-1031) (GST tag)



[Go to Product page](#)

1 Image

Overview

Quantity:	10 µg
Target:	MPHOSPH9
Protein Characteristics:	AA 922-1031
Origin:	Human
Source:	Wheat germ
Protein Type:	Recombinant
Purification tag / Conjugate:	This MPHOSPH9 protein is labelled with GST tag.
Application:	ELISA, Western Blotting (WB), Affinity Purification (AP), Antibody Array (AA)

Product Details

Purpose:	MPHOSPH9 (Human) Recombinant Protein (Q01)
Sequence:	SVRTAWEKNK SVSYEQCKPV SVTPQGNDFE YTAKIRTLAE TERFFDELTK EKDQIEAALS RMPSPGGRIT LQTRLNQEAL EDRLERINRE LGSVRMTLKK FHLVRLTSANL
Characteristics:	Human MPHOSPH9 partial ORF (NP_073619, 922 a.a. - 1031 a.a.) recombinant protein with GST-tag at N-terminal.
Purification:	in vitro wheat germ expression system

Target Details

Target:	MPHOSPH9
Alternative Name:	MPHOSPH9 (MPHOSPH9 Products)

Target Details

Background:	Full Gene Name: M-phase phosphoprotein 9 Synonyms: DKFZp434J034,FLJ12954,MPP-9,MPP9
Gene ID:	10198
NCBI Accession:	NM_022782

Application Details

Application Notes:	Optimal working dilution should be determined by the investigator.
Comment:	Preparation method: in vitro, wheat germ expression system Product Quality tested by: 12.5% SDS-PAGE Stained with Coomassie Blue.
Restrictions:	For Research Use only

Handling

Buffer:	50 mM Tris-HCl, 10 mM reduced Glutathione, pH =8.0 in the elution buffer.
Handling Advice:	Aliquot to avoid repeated freezing and thawing.
Storage:	-80 °C
Storage Comment:	Best use within three months from the date of receipt of this protein.

Images

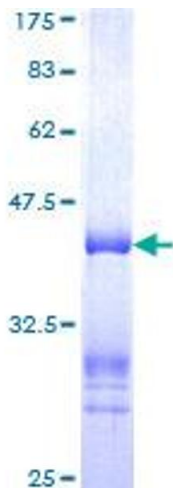


Image 1.