

Datasheet for ABIN1311212

## Myeloperoxidase Protein (MPO) (AA 646-745) (GST tag)



[Go to Product page](#)

### 1 Image

#### Overview

Quantity:	10 µg
Target:	Myeloperoxidase (MPO)
Protein Characteristics:	AA 646-745
Origin:	Human
Source:	Wheat germ
Protein Type:	Recombinant
Purification tag / Conjugate:	This Myeloperoxidase protein is labelled with GST tag.
Application:	Western Blotting (WB), ELISA, Affinity Purification (AP), Antibody Array (AA)

#### Product Details

Purpose:	MPO (Human) Recombinant Protein (Q01)
Sequence:	GVSEPLKRKG RVGPLLACII GTQFRKLRDG DRFWWENEGV FSMQQRQALA QISLPRIICD NTGITTVSKN NIFMSNSYPR DFVNCSTLPA LNLASWREAS
Characteristics:	Human MPO partial ORF ( NP_000241, 646 a.a. - 745 a.a.) recombinant protein with GST-tag at N-terminal.
Purification:	in vitro wheat germ expression system

#### Target Details

Target:	Myeloperoxidase (MPO)
Alternative Name:	MPO ( <a href="#">MPO Products</a> )

## Target Details

Background: Gene: myeloperoxidase

Gene ID: 4353

NCBI Accession: [NM\\_000250](#)

Pathways: [Chromatin Binding](#)

## Application Details

Application Notes: Optimal working dilution should be determined by the investigator.

Restrictions: For Research Use only

## Handling

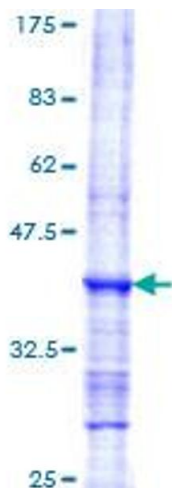
Buffer: 50 mM Tris-HCl, 10 mM reduced Glutathione, pH =8.0 in the elution buffer.

Handling Advice: Aliquot to avoid repeated freezing and thawing.

Storage: -80 °C

Storage Comment: Best use within three months from the date of receipt of this protein.

## Images



**Image 1.**