



[Go to Product page](#)

Datasheet for ABIN1311264

MRC2 Protein (AA 105-214) (GST tag)

1 Image

Overview

Quantity:	10 µg
Target:	MRC2
Protein Characteristics:	AA 105-214
Origin:	Human
Source:	Wheat germ
Protein Type:	Recombinant
Purification tag / Conjugate:	This MRC2 protein is labelled with GST tag.
Application:	Western Blotting (WB), ELISA, Affinity Purification (AP), Antibody Array (AA)

Product Details

Purpose:	MRC2 (Human) Recombinant Protein (Q01)
Sequence:	ASLGMYECDR EALNLRWHCR TLGDQLSLLL GARTSNISKP GTLERGDQTR SGQWRIYGSE EDLCALPYHE VYTIQGNSHG KPCTIPFKYD NQWFHGCTST GREDGHLWCA
Characteristics:	Human MRC2 partial ORF (NP_006030, 105 a.a. - 214 a.a.) recombinant protein with GST-tag at N-terminal.
Purification:	in vitro wheat germ expression system

Target Details

Target:	MRC2
Alternative Name:	MRC2 (MRC2 Products)

Target Details

Background:	Full Gene Name: mannose receptor, C type 2 Synonyms: CD280,CLEC13E,ENDO180,FLJ35911,KIAA0709,UPARAP
Gene ID:	9902
NCBI Accession:	NM_006039

Application Details

Application Notes:	Optimal working dilution should be determined by the investigator.
Comment:	Preparation method: in vitro, wheat germ expression system Product Quality tested by: 12.5% SDS-PAGE Stained with Coomassie Blue.
Restrictions:	For Research Use only

Handling

Buffer:	50 mM Tris-HCl, 10 mM reduced Glutathione, pH =8.0 in the elution buffer.
Handling Advice:	Aliquot to avoid repeated freezing and thawing.
Storage:	-80 °C
Storage Comment:	Best use within three months from the date of receipt of this protein.

Images

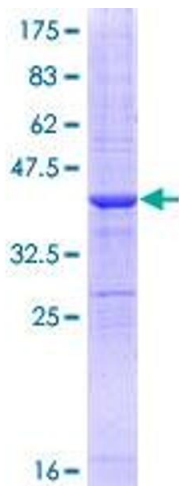


Image 1.