



[Go to Product page](#)

Datasheet for ABIN1311275

## MRGPRX3 Protein (AA 1-322) (GST tag)

### 1 Image

#### Overview

Quantity:	25 µg
Target:	MRGPRX3
Protein Characteristics:	AA 1-322
Origin:	Human
Source:	Wheat germ
Protein Type:	Recombinant
Purification tag / Conjugate:	This MRGPRX3 protein is labelled with GST tag.
Application:	ELISA, Western Blotting (WB), Affinity Purification (AP), Antibody Array (AA)

#### Product Details

Purpose:	MRGPRX3 (Human) Recombinant Protein (P01)
Sequence:	MDSTIPVLGT ELTPINGREE TPCYKQTLSE TGLTCIVSLV ALTGNAVVLW LLGCRMRRNA VSIYILNLVA ADFLFLSGHI ICSPLRLINI RHPISKILSP VMTFPYFIGL SMLSAISTER CLSILWPIWY HCRRPRYLSS VMCVLLWALS LLRSILEWMF CDFLFSGANS VWCETSDFIT IAWLVFLCVV LCGSSLVLLV RILCGSRKMP LTRLVVTILL TVLVFLLCGL PFGIQWALFS RIHLDWKVLV CHVHLVSIFL SALNSSANPI IYFFVGSFRQ RQNRQNLKLV LQRALQDTPE VDEGGGWLPQ ETLELSGSRL EQ
Characteristics:	Human MRGPRX3 full-length ORF ( ENSP00000314065, 1 a.a. - 322 a.a.) recombinant protein with GST-tag at N-terminal.
Purification:	in vitro wheat germ expression system

## Target Details

Target:	MRGPRX3
Alternative Name:	MRGPRX3 ( <a href="#">MRGPRX3 Products</a> )
Background:	Full Gene Name: MAS-related GPR, member X3 Synonyms: GPCR,MRGX3,SNSR1
Gene ID:	117195

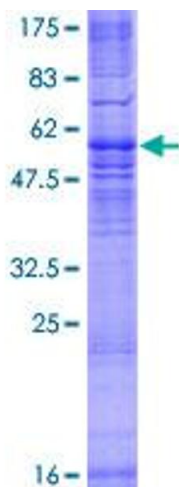
## Application Details

Application Notes:	Optimal working dilution should be determined by the investigator.
Comment:	Preparation method: in vitro, wheat germ expression system Product Quality tested by: 12.5% SDS-PAGE Stained with Coomassie Blue.
Restrictions:	For Research Use only

## Handling

Buffer:	50 mM Tris-HCl, 10 mM reduced Glutathione, pH =8.0 in the elution buffer.
Handling Advice:	Aliquot to avoid repeated freezing and thawing.
Storage:	-80 °C
Storage Comment:	Best use within three months from the date of receipt of this protein.

## Images



**Image 1.**