



[Go to Product page](#)

Datasheet for ABIN1311280

MRM1 Protein (AA 1-353) (GST tag)

1 Image

Overview

Quantity:	10 µg
Target:	MRM1
Protein Characteristics:	AA 1-353
Origin:	Human
Source:	Wheat germ
Protein Type:	Recombinant
Purification tag / Conjugate:	This MRM1 protein is labelled with GST tag.
Application:	ELISA, Western Blotting (WB), Affinity Purification (AP), Antibody Array (AA)

Product Details

Purpose:	MRM1 (Human) Recombinant Protein (P01)
Sequence:	MALLSTVRGA TWGRLVTRHF SHAARHGERP GGEELSRLLL DDLVPTSRLLE LLFGMTPCLL ALQAARRSVA RLLLQAGKAG LQGKRAELLR MAEARDIPVL RPRRQKLDTM CRYQVHQGVC MEVSPLRPRP WREAGEASPG DDPQQLWLVL DGIQDPRNFG AVLRSAHFLG VDKVITSRRN SCPLTPVVS KSSAGAMEVMD VFSTDDL TGF LQTKAQGWL VAGTVGCPST EDQSSSEIPI MSCLEFLWER PTLVLGN EG SGLSQEVQAS CQLLLTILPR RQLPPGLESL NVSVAAGILL HSICSQRKGF PTEGERRQLL QDPQEPSARS EGLSMAQHPG LSSGPEKERQ NEG
Characteristics:	Human MRM1 full-length ORF (NP_079140.2, 1 a.a. - 353 a.a.) recombinant protein with GST-tag at N-terminal.
Purification:	in vitro wheat germ expression system

Target Details

Target:	MRM1
Alternative Name:	MRM1 (MRM1 Products)
Background:	Full Gene Name: mitochondrial rRNA methyltransferase 1 homolog (<i>S. cerevisiae</i>) Synonyms: FLJ22578
Gene ID:	79922
NCBI Accession:	NM_024864

Application Details

Application Notes:	Optimal working dilution should be determined by the investigator.
Comment:	Preparation method: in vitro, wheat germ expression system Product Quality tested by: 12.5% SDS-PAGE Stained with Coomassie Blue.
Restrictions:	For Research Use only

Handling

Buffer:	50 mM Tris-HCl, 10 mM reduced Glutathione, pH =8.0 in the elution buffer.
Handling Advice:	Aliquot to avoid repeated freezing and thawing.
Storage:	-80 °C
Storage Comment:	Best use within three months from the date of receipt of this protein.

Images

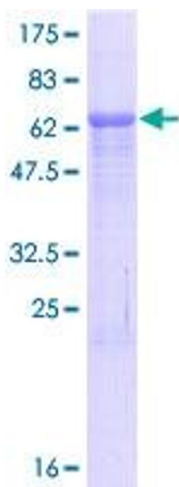


Image 1.