



[Go to Product page](#)

Datasheet for ABIN1311284

MRPL1 Protein (AA 1-303) (GST tag)

1 Image

Overview

Quantity:	10 µg
Target:	MRPL1
Protein Characteristics:	AA 1-303
Origin:	Human
Source:	Wheat germ
Protein Type:	Recombinant
Purification tag / Conjugate:	This MRPL1 protein is labelled with GST tag.
Application:	Western Blotting (WB), ELISA, Affinity Purification (AP), Antibody Array (AA)

Product Details

Purpose:	MRPL1 (Human) Recombinant Protein (P01)
Sequence:	MVYQTSLCSC SVNIRVPNRH FAAAKKSAKK TKGAKKTP DEKKDEIEKI KAYPYMEGEP EDDVYLKRLY PRQIYEVEKA VHLLKKFQIL DFTSPKQSVY LDLTLDMALG KKKNVEPFTS VLSLPYPFAS EINKVAVFTE NASEVKIAEE NGAASAGGTS LIQKIWDDEI VADFYVAVPE IMPELNRLRK KLNKKYPKLS RNSIGRDIPK MLELFKNGHE IKVDEERENF LQTKIATLDM SSDQIAANLQ AVINEVCRHR PLNLGPFVVR AFLRSSTSEG LLLKIDPLLP KEVKNEESEK EDA
Characteristics:	Human MRPL1 full-length ORF (AAH15109, 1 a.a. - 303 a.a.) recombinant protein with GST-tag at N-terminal.
Purification:	in vitro wheat germ expression system

Target Details

Target:	MRPL1
Alternative Name:	MRPL1 (MRPL1 Products)
Background:	Full Gene Name: mitochondrial ribosomal protein L1 Synonyms: BM022,FLJ96680,L1MT,MRP-L1
Gene ID:	65008

Application Details

Application Notes:	Optimal working dilution should be determined by the investigator.
Comment:	Preparation method: in vitro, wheat germ expression system Product Quality tested by: 12.5% SDS-PAGE Stained with Coomassie Blue.
Restrictions:	For Research Use only

Handling

Buffer:	50 mM Tris-HCl, 10 mM reduced Glutathione, pH =8.0 in the elution buffer.
Handling Advice:	Aliquot to avoid repeated freezing and thawing.
Storage:	-80 °C
Storage Comment:	Best use within three months from the date of receipt of this protein.

Images

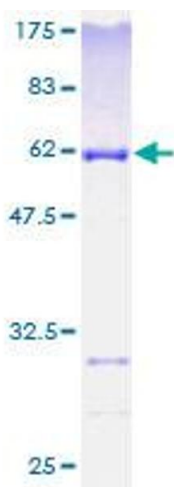


Image 1.