



[Go to Product page](#)

Datasheet for ABIN1311300

MRPL18 Protein (AA 1-180) (GST tag)

1 Image

Overview

Quantity:	10 µg
Target:	MRPL18
Protein Characteristics:	AA 1-180
Origin:	Human
Source:	Wheat germ
Protein Type:	Recombinant
Purification tag / Conjugate:	This MRPL18 protein is labelled with GST tag.
Application:	Affinity Purification (AP), Antibody Array (AA), ELISA, Western Blotting (WB)

Product Details

Purpose:	MRPL18 (Human) Recombinant Protein (P01)
Sequence:	MALRSRFWGL FSVCRNPGCR FAALSTSSEP AAKPEVDPVE NEAVAPEFTN RNPRNLELLS VARKERGWRT VFPSREFWHR LRVIRTQHHV EALVEHQNGK VVVSASTREW AIKKHLYSTR NVVACESIGR VLAQRCLEAG INFMVYQPTP WEAASDSMKR LQSAMTEGGV VLREPQRIYE
Characteristics:	Human MRPL18 full-length ORF (NP_054880.2, 1 a.a. - 180 a.a.) recombinant protein with GST-tag at N-terminal.
Purification:	in vitro wheat germ expression system

Target Details

Target:	MRPL18
Alternative Name:	MRPL18 (MRPL18 Products)

Target Details

Background:	Full Gene Name: mitochondrial ribosomal protein L18 Synonyms: HSPC071,L18mt,MRP-L18
Gene ID:	29074
NCBI Accession:	NM_014161

Application Details

Application Notes:	Optimal working dilution should be determined by the investigator.
Comment:	Preparation method: in vitro, wheat germ expression system Product Quality tested by: 12.5% SDS-PAGE Stained with Coomassie Blue.
Restrictions:	For Research Use only

Handling

Buffer:	50 mM Tris-HCl, 10 mM reduced Glutathione, pH =8.0 in the elution buffer.
Handling Advice:	Aliquot to avoid repeated freezing and thawing.
Storage:	-80 °C
Storage Comment:	Best use within three months from the date of receipt of this protein.

Images

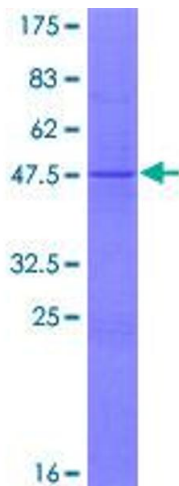


Image 1.