



[Go to Product page](#)

Datasheet for ABIN1311342

## MRPL49 Protein (AA 67-166) (GST tag)

### 1 Image

#### Overview

Quantity:	10 µg
Target:	MRPL49
Protein Characteristics:	AA 67-166
Origin:	Human
Source:	Wheat germ
Protein Type:	Recombinant
Purification tag / Conjugate:	This MRPL49 protein is labelled with GST tag.
Application:	ELISA, Western Blotting (WB), Affinity Purification (AP), Antibody Array (AA)

#### Product Details

Purpose:	MRPL49 (Human) Recombinant Protein (Q01)
Sequence:	PTPSGWQPPR DPPPNLPYFV RRSRMHNIPV YKDITHGNRQ MTVIRKVEGD IWALQKDVED FLSPLLGTKP VTQVNEVTGT LRIKGYFDQE LKAWLLEKGF
Characteristics:	Human MRPL49 partial ORF ( NP_004918, 67 a.a. - 166 a.a.) recombinant protein with GST-tag at N-terminal.
Purification:	in vitro wheat germ expression system

#### Target Details

Target:	MRPL49
Alternative Name:	MRPL49 ( <a href="#">MRPL49 Products</a> )

## Target Details

Background:	Full Gene Name: mitochondrial ribosomal protein L49 Synonyms: C11orf4,L49mt,MGC10656,NOF,NOF1
Gene ID:	740
NCBI Accession:	<a href="#">NM_004927</a>

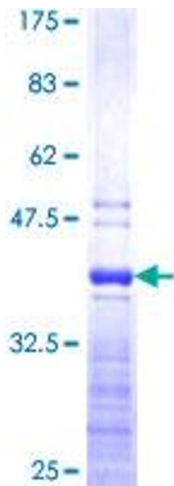
## Application Details

Application Notes:	Optimal working dilution should be determined by the investigator.
Comment:	Preparation method: in vitro, wheat germ expression system Product Quality tested by: 12.5% SDS-PAGE Stained with Coomassie Blue.
Restrictions:	For Research Use only

## Handling

Buffer:	50 mM Tris-HCl, 10 mM reduced Glutathione, pH =8.0 in the elution buffer.
Handling Advice:	Aliquot to avoid repeated freezing and thawing.
Storage:	-80 °C
Storage Comment:	Best use within three months from the date of receipt of this protein.

## Images



**Image 1.**