

Datasheet for ABIN1311376

MRPS28 Protein (AA 1-187) (GST tag)



[Go to Product page](#)

1 Image

Overview

Quantity:	10 µg
Target:	MRPS28
Protein Characteristics:	AA 1-187
Origin:	Human
Source:	Wheat germ
Protein Type:	Recombinant
Purification tag / Conjugate:	This MRPS28 protein is labelled with GST tag.
Application:	ELISA, Western Blotting (WB), Affinity Purification (AP), Antibody Array (AA)

Product Details

Purpose:	MRPS28 (Human) Recombinant Protein (P01)
Sequence:	MAALCRTRAV AAESHFLRVF LFFRPFRGVG TEGSESGSS NAKEPKTRAG GFASALERHS ELLQKVEPLQ KGSPKNVESF ASMLRHSPLT QMGPAKDKLV IGRIFHIVEN DLYIDFGGKF HCVCRRPEVD GEKYQKGTRV RLRLDLELT SRFLGATTD TTVLEANAVLL GIQESKDSRS KEEHHEK
Characteristics:	Human MRPS28 full-length ORF (NP_054737.1, 1 a.a. - 187 a.a.) recombinant protein with GST-tag at N-terminal.
Purification:	in vitro wheat germ expression system

Target Details

Target:	MRPS28
---------	--------

Target Details

Alternative Name:	MRPS28 (MRPS28 Products)
Background:	Full Gene Name: mitochondrial ribosomal protein S28 Synonyms: FLJ22853,HSPC007,MRP-S28,MRP-S35,MRPS35
Gene ID:	28957
NCBI Accession:	NM_014018

Application Details

Application Notes:	Optimal working dilution should be determined by the investigator.
Comment:	Preparation method: in vitro, wheat germ expression system Product Quality tested by: 12.5% SDS-PAGE Stained with Coomassie Blue.
Restrictions:	For Research Use only

Handling

Buffer:	50 mM Tris-HCl, 10 mM reduced Glutathione, pH =8.0 in the elution buffer.
Handling Advice:	Aliquot to avoid repeated freezing and thawing.
Storage:	-80 °C
Storage Comment:	Best use within three months from the date of receipt of this protein.

Images

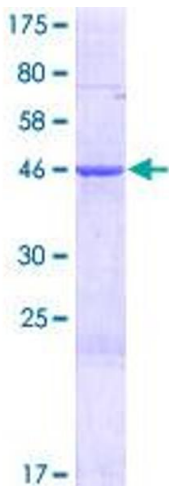


Image 1.