

Datasheet for ABIN1311382

MRPS35 Protein (AA 1-323) (GST tag)



[Go to Product page](#)

1 Image

Overview

Quantity:	10 µg
Target:	MRPS35
Protein Characteristics:	AA 1-323
Origin:	Human
Source:	Wheat germ
Protein Type:	Recombinant
Purification tag / Conjugate:	This MRPS35 protein is labelled with GST tag.
Application:	Affinity Purification (AP), Antibody Array (AA), ELISA, Western Blotting (WB)

Product Details

Purpose:	MRPS35 (Human) Recombinant Protein (P01)
Sequence:	MAAAALPAWL SLQSRARTLR AFSTAVYSAT PVPTPSLPER TPGNERPPRR KALPPRTEKM AVDQDWPSVY PVAAPFKPSA VPLPVRMGYP VKKGVPMAKE GNLELLKIPN FLHLTPVAIK KHCEALKDFC TEWPAALDSD EKCEKHFPIE IDSTDYVSSG PSVRNPRARV VVLRVKLSSL NLDDHAKKKL IKLVGERYCK TTDVLTIKTD RCPLRRQNYD YAVYLLTVLY HESWNTEEWE KSKTEADMEE YIWENSSSER NILETLLQMK AAEKNMEINK EELLGTKEIE EYKKS VVSLK NEEENENSIS QYKESVKRLL NVT
Characteristics:	Human MRPS35 full-length ORF (NP_068593.2, 1 a.a. - 323 a.a.) recombinant protein with GST-tag at N-terminal.
Purification:	in vitro wheat germ expression system

Target Details

Target:	MRPS35
Alternative Name:	MRPS35 (MRPS35 Products)
Background:	Full Gene Name: mitochondrial ribosomal protein S35 Synonyms: DKFZp762P093,HDCMD11P,MDS023,MGC104278,MRP-S28,MRPS28
Gene ID:	60488
NCBI Accession:	NM_021821

Application Details

Application Notes:	Optimal working dilution should be determined by the investigator.
Comment:	Preparation method: in vitro, wheat germ expression system Product Quality tested by: 12.5% SDS-PAGE Stained with Coomassie Blue.
Restrictions:	For Research Use only

Handling

Buffer:	50 mM Tris-HCl, 10 mM reduced Glutathione, pH =8.0 in the elution buffer.
Handling Advice:	Aliquot to avoid repeated freezing and thawing.
Storage:	-80 °C
Storage Comment:	Best use within three months from the date of receipt of this protein.

Images

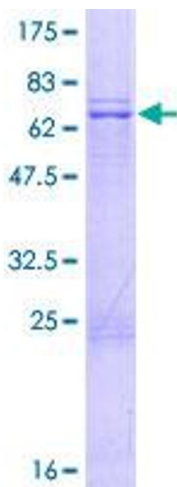


Image 1.