



Datasheet for ABIN1311386  
**MRPS5 Protein (AA 1-430) (GST tag)**



[Go to Product page](#)

1 Image

Overview

Quantity:	10 µg
Target:	MRPS5
Protein Characteristics:	AA 1-430
Origin:	Human
Source:	Wheat germ
Protein Type:	Recombinant
Purification tag / Conjugate:	This MRPS5 protein is labelled with GST tag.
Application:	ELISA, Western Blotting (WB), Affinity Purification (AP), Antibody Array (AA)

Product Details

Purpose:	MRPS5 (Human) Recombinant Protein (P01)
Sequence:	MATAVRAVGC LPVLCSTAG HLLGRQCSLN TLPAASILAW KSVLGNHLS SLGTRDTHPY ASLSRALQTQ CCISSPSHLM SQQYRPYSFF TKLTADLWK GALAETGAGA KKGRGKRTKK KKRKDLNRGQ IIEGGRYGF LWPGLNVPLMK NGAVQTIAQR SKKEQEKVEA DMIQQREEDW RKKMKMKVKRE RGWSGNSWGG ISLGPPDPGP CGETYEDFDT RILEVRNVFT MTAKEGRKKS IRVLVAVGNG KGAAGFSIGK ATRMDAFRK AKNRAVHHLH YIEREDHTI FHDISLRFKR THIKMKKQPK GYGLRCHRAI ITICRLIGIK DMYAKVSGSI NMLSLTQGLF RGLSRQETHQ QLADKKGLHV VEIREECGPL PIVVASPRGP LRKDPEPEDE VPDVKLDWED VKTAQGMKRS VWSNLKRAAT
Characteristics:	Human MRPS5 full-length ORF ( NP_114108.1, 1 a.a. - 430 a.a.) recombinant protein with GST-tag at N-terminal.

## Product Details

---

Purification: in vitro wheat germ expression system

## Target Details

---

Target: MRPS5

Alternative Name: MRPS5 ([MRPS5 Products](#))

Background: Full Gene Name: mitochondrial ribosomal protein S5  
Synonyms: MRP-S5,S5mt

Gene ID: 64969

NCBI Accession: [NM\\_031902](#)

Pathways: [SARS-CoV-2 Protein Interactome](#)

## Application Details

---

Application Notes: Optimal working dilution should be determined by the investigator.

Comment: Preparation method: in vitro, wheat germ expression system  
Product Quality tested by: 12.5% SDS-PAGE Stained with Coomassie Blue.

Restrictions: For Research Use only

## Handling

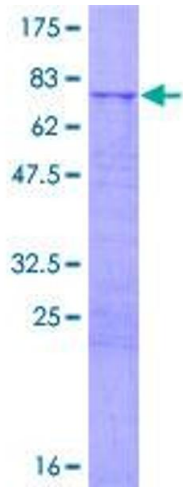
---

Buffer: 50 mM Tris-HCl, 10 mM reduced Glutathione, pH =8.0 in the elution buffer.

Handling Advice: Aliquot to avoid repeated freezing and thawing.

Storage: -80 °C

Storage Comment: Best use within three months from the date of receipt of this protein.



**Image 1.**