



[Go to Product page](#)

Datasheet for ABIN1311390

## MRPS9 Protein (AA 1-396) (GST tag)

### 1 Image

#### Overview

Quantity:	10 µg
Target:	MRPS9
Protein Characteristics:	AA 1-396
Origin:	Human
Source:	Wheat germ
Protein Type:	Recombinant
Purification tag / Conjugate:	This MRPS9 protein is labelled with GST tag.
Application:	Affinity Purification (AP), Antibody Array (AA), ELISA, Western Blotting (WB)

#### Product Details

Purpose:	MRPS9 (Human) Recombinant Protein (P01)
Sequence:	MAAPCVSYGG AVSYRLLLWG RGSLARKQGL WKTAAPQLQT NVRSQILRLR HTAFVIPKKN VPTSKRETYT EDFIKKQIEE FNIGKRHLAN MMGEDPETFT QEDIDRAIAY LFPSGLFEKR ARPVMKHPEQ IFPRQRAIQW GEDGRPFHYL FYTGKQSYYS LMHDVYGMML NLEKHQSHLQ AKSLLPEKTV TRDVIGSRWL IKEELEEMLV EKLSLDYMQ FIRLLEKLLT SQCGAAEEEF VQRFRRSVTL ESKKQLIEPV QYDEQGMFAFS KSEGKRKTAK AEAIVYKHGS GRIKVNIDY QLYFPITQDR EQLMFPPHFV DRLGKHDVTC TVSGGGRSAQ AGAIRLAMAK ALCSFVTEDE VEWMRQAGLL TTDPRVRERK KPGQEGARRK FTWKKR
Characteristics:	Human MRPS9 full-length ORF ( NP_872578.1, 1 a.a. - 396 a.a.) recombinant protein with GST-tag at N-terminal.
Purification:	in vitro wheat germ expression system

## Target Details

Target:	MRPS9
Alternative Name:	MRPS9 ( <a href="#">MRPS9 Products</a> )
Background:	Full Gene Name: mitochondrial ribosomal protein S9 Synonyms: MRP-S9,RPMS9,S9mt
Gene ID:	64965
NCBI Accession:	<a href="#">NM_182640</a>

## Application Details

Application Notes:	Optimal working dilution should be determined by the investigator.
Comment:	Preparation method: in vitro, wheat germ expression system Product Quality tested by: 12.5% SDS-PAGE Stained with Coomassie Blue.
Restrictions:	For Research Use only

## Handling

Buffer:	50 mM Tris-HCl, 10 mM reduced Glutathione, pH =8.0 in the elution buffer.
Handling Advice:	Aliquot to avoid repeated freezing and thawing.
Storage:	-80 °C
Storage Comment:	Best use within three months from the date of receipt of this protein.

## Images

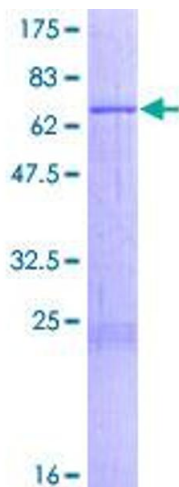


Image 1.