



[Go to Product page](#)

Datasheet for ABIN1311401

## CD20 Protein (AA 210-297) (GST tag)

### 1 Image

#### Overview

Quantity:	10 µg
Target:	CD20 (MS4A1)
Protein Characteristics:	AA 210-297
Origin:	Human
Source:	Wheat germ
Protein Type:	Recombinant
Purification tag / Conjugate:	This CD20 protein is labelled with GST tag.
Application:	Western Blotting (WB), ELISA, Affinity Purification (AP), Antibody Array (AA)

#### Product Details

Purpose:	MS4A1 (Human) Recombinant Protein (Q01)
Sequence:	GIVENEWKRT CSRPKSNIVL LSAEEKKEQT IEIKEEVVGL TETSSQPKNE EDIEIPIQE EEEEEETETNF PEPPQDQESS PIENDSSP
Characteristics:	Human MS4A1 partial ORF ( AAH02807, 210 a.a. - 297 a.a.) recombinant protein with GST-tag at N-terminal.
Purification:	in vitro wheat germ expression system

#### Target Details

Target:	CD20 (MS4A1)
Alternative Name:	MS4A1 ( <a href="#">MS4A1 Products</a> )

## Target Details

Background:	Gene: membrane-spanning 4-domains, subfamily A, member 1 Synonyms: B1, Bp35, CD20, LEU-16, MGC3969, MS4A2, S7
Gene ID:	931

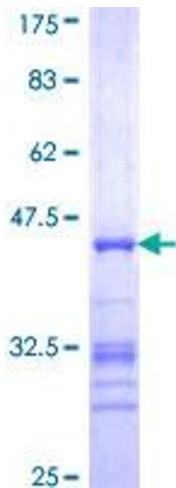
## Application Details

Application Notes:	Optimal working dilution should be determined by the investigator.
Restrictions:	For Research Use only

## Handling

Buffer:	50 mM Tris-HCl, 10 mM reduced Glutathione, pH =8.0 in the elution buffer.
Handling Advice:	Aliquot to avoid repeated freezing and thawing.
Storage:	-80 °C
Storage Comment:	Best use within three months from the date of receipt of this protein.

## Images



**Image 1.**