



[Go to Product page](#)

Datasheet for ABIN1311416

MS4A5 Protein (AA 1-200) (GST tag)

1 Image

Overview

Quantity:	25 µg
Target:	MS4A5
Protein Characteristics:	AA 1-200
Origin:	Human
Source:	Wheat germ
Protein Type:	Recombinant
Purification tag / Conjugate:	This MS4A5 protein is labelled with GST tag.
Application:	ELISA, Western Blotting (WB), Affinity Purification (AP), Antibody Array (AA)

Product Details

Purpose:	MS4A5 (Human) Recombinant Protein (P01)
Sequence:	MDSSTAHSVPV FLVFPPEITA SEYESTELSA TTFSTQSPLQ KLFARKMKIL GTIQILFGIM TFSFGVIFLF TLLKPYPRFP FIFLSGYPFW GSVLFINSGA FLIAVKRKTT ETLILSRIM NFLSALGAIA GIILLTFGFI LDQNYICGYS HQNSQCKAVT VLFLGILITL MTFSIIELEFI SLPFSILGCH SEDCDCEQCC
Characteristics:	Human MS4A5 full-length ORF (NP_076434.2, 1 a.a. - 200 a.a.) recombinant protein with GST-tag at N-terminal.
Purification:	in vitro wheat germ expression system

Target Details

Target:	MS4A5
Alternative Name:	MS4A5 (MS4A5 Products)

Target Details

Background:	Full Gene Name: membrane-spanning 4-domains, subfamily A, member 5 Synonyms: CD20-L2,CD20L2,MGC34184,TETM4
Gene ID:	64232
NCBI Accession:	NM_023945

Application Details

Application Notes:	Optimal working dilution should be determined by the investigator.
Comment:	Preparation method: in vitro, wheat germ expression system Product Quality tested by: 12.5% SDS-PAGE Stained with Coomassie Blue.
Restrictions:	For Research Use only

Handling

Buffer:	50 mM Tris-HCl, 10 mM reduced Glutathione, pH =8.0 in the elution buffer.
Handling Advice:	Aliquot to avoid repeated freezing and thawing.
Storage:	-80 °C
Storage Comment:	Best use within three months from the date of receipt of this protein.

Images

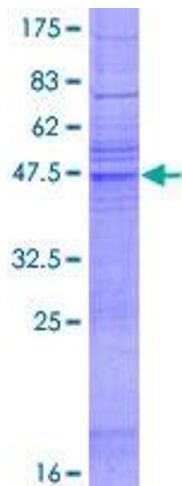


Image 1.