



[Go to Product page](#)

Datasheet for ABIN1311455

## MSL3 Protein (AA 1-521) (GST tag)

### 1 Image

#### Overview

Quantity:	10 µg
Target:	MSL3
Protein Characteristics:	AA 1-521
Origin:	Human
Source:	Wheat germ
Protein Type:	Recombinant
Purification tag / Conjugate:	This MSL3 protein is labelled with GST tag.
Application:	ELISA, Western Blotting (WB), Affinity Purification (AP), Antibody Array (AA)

#### Product Details

Purpose:	MSL3L1 (Human) Recombinant Protein (P01)
Sequence:	MSASEGMKFK FHSGEKVLCF EPDPTKARVL YDAKIVDVIV GKDEKGRKIP EYLIHFNGWN RSWDRWAAED HVLRD TDENR RLQRKLARKA VARLRSTGRK KKRCRLPGVD SVLKGLPTEE KDENDENSLS SSSDCSENKD EEISEESDIE EKTEVKEEPE LQTRREMEER TITIEIPEVL KKQLEDDCYI INRRKRLVKL PCQTNITIL ESYVKHFAIN AAFSANERPR HHHVMPHANM NVHYIPAEKN VDLCKEMVDG LRITFDYTLV LVLVLPYEQA QYKKVTSSKF FLPIKESATS TNRSQEELSP SPPLLNPTSTP QSTESQPTTG EPATPKRRKA EPEALQSLRR STRHSANCDR LSESSASPQP KRRQDTSAS MPKLFHLHLEK KTPVHSRSSH PIPLTPSKEG SAVFAGFEGR RTNEINEVLS WKLVPDNYPP GDQPPPPSYI YGAQHLLRLF VKLPEILGKM SFSEKNLKAL LKHFDLFLRF LAEYHDDFFP ESAYVAACEA HYSTKNPRAI Y
Characteristics:	Human MSL3L1 full-length ORF ( AAH31210.1, 1 a.a. - 521 a.a.) recombinant protein with GST-tag at N-terminal.

## Product Details

---

Purification: in vitro wheat germ expression system

## Target Details

---

Target: MSL3

Alternative Name: MSL3 ([MSL3 Products](#))

Background: Full Gene Name: male-specific lethal 3 homolog (Drosophila)  
Synonyms: DKFZp586J1822,MSL3L1

Gene ID: 10943

## Application Details

---

Application Notes: Optimal working dilution should be determined by the investigator.

Comment: Preparation method: in vitro, wheat germ expression system  
Product Quality tested by: 12.5% SDS-PAGE Stained with Coomassie Blue.

Restrictions: For Research Use only

## Handling

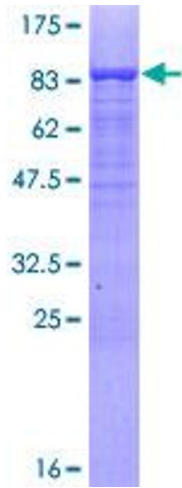
---

Buffer: 50 mM Tris-HCl, 10 mM reduced Glutathione, pH =8.0 in the elution buffer.

Handling Advice: Aliquot to avoid repeated freezing and thawing.

Storage: -80 °C

Storage Comment: Best use within three months from the date of receipt of this protein.



**Image 1.**