



[Go to Product page](#)

Datasheet for ABIN1311463

## MSMB Protein (AA 1-114) (GST tag)

### 1 Image

#### Overview

Quantity:	10 µg
Target:	MSMB
Protein Characteristics:	AA 1-114
Origin:	Human
Source:	Wheat germ
Protein Type:	Recombinant
Purification tag / Conjugate:	This MSMB protein is labelled with GST tag.
Application:	Western Blotting (WB), ELISA, Affinity Purification (AP), Antibody Array (AA)

#### Product Details

Purpose:	MSMB (Human) Recombinant Protein (P01)
Sequence:	MNVLLGSVVI FATFVTLICNA SCYFIPNEGV PGDSTRKCMD LKGNKHPINS EWQTDNCETC TCYETEISCC TLVSTPVGVD KDNCQRIFKK EDCKYIVVEK KDPKKTCSVS EWII
Characteristics:	Human MSMB full-length ORF ( AAH05257.1, 1 a.a. - 114 a.a.) recombinant protein with GST-tag at N-terminal.
Purification:	in vitro wheat germ expression system

#### Target Details

Target:	MSMB
Alternative Name:	MSMB ( <a href="#">MSMB Products</a> )

## Target Details

Background:	Full Gene Name: microseminoprotein, beta- Synonyms: HPC13,IGBF,MSP,MSPB,PN44,PRPS,PSP,PSP-94,PSP57,PSP94
Gene ID:	4477

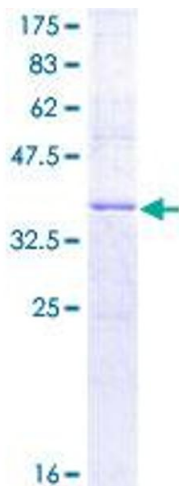
## Application Details

Application Notes:	Optimal working dilution should be determined by the investigator.
Comment:	Preparation method: in vitro, wheat germ expression system Product Quality tested by: 12.5% SDS-PAGE Stained with Coomassie Blue.
Restrictions:	For Research Use only

## Handling

Buffer:	50 mM Tris-HCl, 10 mM reduced Glutathione, pH =8.0 in the elution buffer.
Handling Advice:	Aliquot to avoid repeated freezing and thawing.
Storage:	-80 °C
Storage Comment:	Best use within three months from the date of receipt of this protein.

## Images



**Image 1.**