

Datasheet for ABIN1311479

## ZMYND17 Protein (AA 1-460) (GST tag)



[Go to Product page](#)

### 1 Image

#### Overview

Quantity:	25 µg
Target:	ZMYND17
Protein Characteristics:	AA 1-460
Origin:	Human
Source:	Wheat germ
Protein Type:	Recombinant
Purification tag / Conjugate:	This ZMYND17 protein is labelled with GST tag.
Application:	ELISA, Western Blotting (WB), Affinity Purification (AP), Antibody Array (AA)

#### Product Details

Purpose:	MSS51 (Human) Recombinant Protein (P01)
Sequence:	MAPRSRRRRH KKPPSSVAPI IMAPTTIVTP VPLTPSKPGP SIDTLGFFSL DDNVPGLSQL ILQKLNMKSY EEYKLVVDGG TPVSGFGFRC PQEMFQRMED TFRFCAHCRA LPSGLSDSKV LRHCKRCRNV YYCGPECQKS DWPAHRRVCQ ELRLVAVDRL MEWLLVTGDF VLPSGPWPWP PEAVQDWDSW FSMKGLHLDA TLDAVLVSHA VTTLWASVGR PRDPDVLQG SLKRLLTDVL SRPLTLGLGL RALGIDVRR TGGSTVHVGA SHVETFLTRP GDYDELGYMF PGHLGLRVVM VGVDVATGFS QSTSTSPLEP GTIQLSAHRG LYHDFWEEQV ETGQTHHPDL VAAFHPGFHS SPDLMEAWLP TLLLLRDYKI PTLITVYSHQ ELVSSLQILV ELDTHITAVG SNPFMSLKPE QVYSSPNKQP VYCSAYYIMF LGSSCQLDNR QLEEKVDGGI
Characteristics:	Human MSS51 full-length ORF ( AAH94693.1, 1 a.a. - 460 a.a.) recombinant protein with GST-tag at N-terminal.

## Product Details

---

Purification: in vitro wheat germ expression system

## Target Details

---

Target: ZMYND17

Alternative Name: MSS51 ([ZMYND17 Products](#))

Background: Full Gene Name: MSS51 mitochondrial translational activator homolog (*S. cerevisiae*)  
Synonyms: RP11-345K20.3,ZMYND17

Gene ID: 118490

## Application Details

---

Application Notes: Optimal working dilution should be determined by the investigator.

Comment: Preparation method: in vitro, wheat germ expression system  
Product Quality tested by: 12.5% SDS-PAGE Stained with Coomassie Blue.

Restrictions: For Research Use only

## Handling

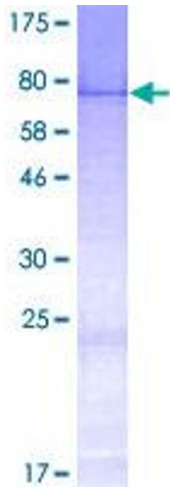
---

Buffer: 50 mM Tris-HCl, 10 mM reduced Glutathione, pH =8.0 in the elution buffer.

Handling Advice: Aliquot to avoid repeated freezing and thawing.

Storage: -80 °C

Storage Comment: Best use within three months from the date of receipt of this protein.



**Image 1.**