



Datasheet for ABIN1311483

## MST1R Protein (AA 26-125) (GST tag)



[Go to Product page](#)

### 1 Image

#### Overview

Quantity:	10 µg
Target:	MST1R
Protein Characteristics:	AA 26-125
Origin:	Human
Source:	Wheat germ
Protein Type:	Recombinant
Purification tag / Conjugate:	This MST1R protein is labelled with GST tag.
Application:	Western Blotting (WB), ELISA, Affinity Purification (AP), Antibody Array (AA)

#### Product Details

Purpose:	MST1R (Human) Recombinant Protein (Q01)
Sequence:	DWQCP RTPYA ASRDFDVKYV VPSFSAGGLV QAMVTYEGDR NESAVFVAIR NRLHVLGPDL KSVQSLATGP AGDPGCQTCA ACGPGPHGPP GDTDTKVLVL
Characteristics:	Human MST1R partial ORF ( NP_002438, 26 a.a. - 125 a.a.) recombinant protein with GST-tag at N-terminal.
Purification:	in vitro wheat germ expression system

#### Target Details

Target:	MST1R
Alternative Name:	MST1R ( <a href="#">MST1R Products</a> )

## Target Details

Background:	Full Gene Name: macrophage stimulating 1 receptor (c-met-related tyrosine kinase) Synonyms: CD136,CDw136,PTK8,RON
Gene ID:	4486
NCBI Accession:	<a href="#">NM_002447</a>
Pathways:	<a href="#">RTK Signaling</a>

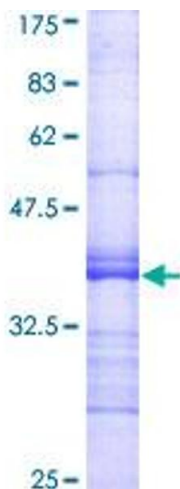
## Application Details

Application Notes:	Optimal working dilution should be determined by the investigator.
Comment:	Preparation method: in vitro, wheat germ expression system Product Quality tested by: 12.5% SDS-PAGE Stained with Coomassie Blue.
Restrictions:	For Research Use only

## Handling

Buffer:	50 mM Tris-HCl, 10 mM reduced Glutathione, pH =8.0 in the elution buffer.
Handling Advice:	Aliquot to avoid repeated freezing and thawing.
Storage:	-80 °C
Storage Comment:	Best use within three months from the date of receipt of this protein.

## Images



**Image 1.**