



Datasheet for ABIN1311542

MTERFD1 Protein (AA 1-417) (GST tag)



[Go to Product page](#)

1 Image

Overview

Quantity:	25 µg
Target:	MTERFD1
Protein Characteristics:	AA 1-417
Origin:	Human
Source:	Wheat germ
Protein Type:	Recombinant
Purification tag / Conjugate:	This MTERFD1 protein is labelled with GST tag.
Application:	ELISA, Western Blotting (WB), Affinity Purification (AP), Antibody Array (AA)

Product Details

Purpose:	MTERFD1 (Human) Recombinant Protein (P01)
Sequence:	MALSAQQIPR WFNSVKLRSL INAAQLTKRF TRPARTLLHG FSAQPQISSD NCFLQWGFKT YRTSSLWNSS QSTSSSSSQEN NSAQSSLLPS MNEQSQKTQN ISSFDSEFL EELDELPPLS PMQPISEEEA IQIADPPLP PASFTLRDYG DHSETLQKLV LLGVDLSKIE KHPEANLLL RLDFEKDIKQ MLLFLKDVGI EDNQLGAFLT KNHAIFSEDL ENLKTRVAYL HSKNFSKADV AQMVRKAPFL LNFSVERLDN RLGFFQKELE LSVKKTRDLV VRLPRLTGS LEPVKENMKV YRLELGFKHN EIQHMITRIP KMLTANKMKL TETDFDVHNV MSIPHHIVK FPQVFNTRLF KVKERHLFLT YLGRAQYDPA KPNYISLDKL VSIPDEIFCE EIAKASVQDF EKFLKTL
Characteristics:	Human MTERFD1 full-length ORF (NP_057026.3, 1 a.a. - 417 a.a.) recombinant protein with GST-tag at N-terminal.
Purification:	in vitro wheat germ expression system

Target Details

Target:	MTERFD1
Alternative Name:	MTERFD1 (MTERFD1 Products)
Background:	Full Gene Name: MTERF domain containing 1 Synonyms: CGI-12,FLJ10939
Gene ID:	51001
NCBI Accession:	NM_015942

Application Details

Application Notes:	Optimal working dilution should be determined by the investigator.
Comment:	Preparation method: in vitro, wheat germ expression system Product Quality tested by: 12.5% SDS-PAGE Stained with Coomassie Blue.
Restrictions:	For Research Use only

Handling

Buffer:	50 mM Tris-HCl, 10 mM reduced Glutathione, pH =8.0 in the elution buffer.
Handling Advice:	Aliquot to avoid repeated freezing and thawing.
Storage:	-80 °C
Storage Comment:	Best use within three months from the date of receipt of this protein.

Images

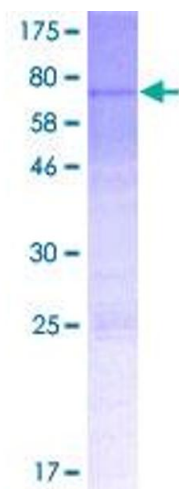


Image 1.