

Datasheet for ABIN1311543

MTERFD2 Protein (AA 1-381) (GST tag)



[Go to Product page](#)

1 Image

Overview

Quantity:	25 µg
Target:	MTERFD2
Protein Characteristics:	AA 1-381
Origin:	Human
Source:	Wheat germ
Protein Type:	Recombinant
Purification tag / Conjugate:	This MTERFD2 protein is labelled with GST tag.
Application:	ELISA, Western Blotting (WB), Affinity Purification (AP), Antibody Array (AA)

Product Details

Purpose:	MTERFD2 (Human) Recombinant Protein (P01)
Sequence:	MAAFGRQVLD WHRLIPLTWA CMARQTPHLG EQRRTTASLL RKLTTASNGG VIEELSCVRS NNYVQEPECR RNLVQC LLEK QGTPVVQGS L ELERVMSSLL DMGFSNAHIN ELLSVRRGAS LQQLLDIISE FILLGLNPEP VCVVLK KSPQ LLKLPIMQMR KRSSYLQKLG LGEGKLKRVL YCCPEIFTMR QQDINDTVRL LKEKCLFTVQ QVTKILHSCP SVLREDLGQL EYKFQYAYFR MGIKHPDIVK SEYLQYSLTK IKQRHIYLER LGRYQTPDKK GQTQIPNPLL KDILRVSEAE FLARACTSV EEFQVFKLL AREEEEESESS TSDDKRASLD EDEDDDEED NDEDDNDEDD DEDDDEAED NDEDEDDDEE E
Characteristics:	Human MTERFD2 full-length ORF (NP_872307.2, 1 a.a. - 381 a.a.) recombinant protein with GST-tag at N-terminal.
Purification:	in vitro wheat germ expression system

Target Details

Target:	MTERFD2
Alternative Name:	MTERFD2 (MTERFD2 Products)
Background:	Full Gene Name: MTERF domain containing 2 Synonyms: FLJ16261,MGC61716
Gene ID:	130916
NCBI Accession:	NM_182501

Application Details

Application Notes:	Optimal working dilution should be determined by the investigator.
Comment:	Preparation method: in vitro, wheat germ expression system Product Quality tested by: 12.5% SDS-PAGE Stained with Coomassie Blue.
Restrictions:	For Research Use only

Handling

Buffer:	50 mM Tris-HCl, 10 mM reduced Glutathione, pH =8.0 in the elution buffer.
Handling Advice:	Aliquot to avoid repeated freezing and thawing.
Storage:	-80 °C
Storage Comment:	Best use within three months from the date of receipt of this protein.

Images

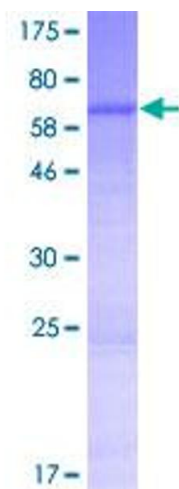


Image 1.