



[Go to Product page](#)

Datasheet for ABIN1311544

MTERFD3 Protein (AA 1-385) (GST tag)

1 Image

Overview

Quantity:	25 µg
Target:	MTERFD3
Protein Characteristics:	AA 1-385
Origin:	Human
Source:	Wheat germ
Protein Type:	Recombinant
Purification tag / Conjugate:	This MTERFD3 protein is labelled with GST tag.
Application:	ELISA, Western Blotting (WB), Affinity Purification (AP), Antibody Array (AA)

Product Details

Purpose:	MTERFD3 (Human) Recombinant Protein (P01)
Sequence:	MLWKLLLSQ SCRLCSFRKM RSPPKYRPFL ACFTYTTDKQ SSKENTRTVE KLYKCSVDIR KIRRLKGWVL LEDETYVEEI ANILQELGAD ETAVASILER CPEAIVCSPT AVNTQRKLWQ LVCKNEEELI KLIEQFPESF FTIKDQENQK LNVQFFQELG LKNVVISRLL TAAPNVFHNP VEKNKQMVRI LQESYLDVGG SEANMKVWLL KLLSQNPFIL LNSPTAIKET LEFLQEQGFT SFEILQLLSK LKGFLFQLCP RSIQNSISFS KNAFKCTDHD LKQLVLKCPA LLYSVPVLE ERMQGLLREG ISIAQIRETP MVLELTPQIV QYRIRKLNSS GYRIKDGHLA NLNGSKKEFE ANFGKIQAKK VRPLFNPVAP LNVEE
Characteristics:	Human MTERFD3 full-length ORF (NP_079474.2, 1 a.a. - 385 a.a.) recombinant protein with GST-tag at N-terminal.
Purification:	in vitro wheat germ expression system

Target Details

Target:	MTERFD3
Alternative Name:	MTERFD3 (MTERFD3 Products)
Background:	Full Gene Name: MTERF domain containing 3 Synonyms: FLJ14062,mTERFL
Gene ID:	80298
NCBI Accession:	NM_025198

Application Details

Application Notes:	Optimal working dilution should be determined by the investigator.
Comment:	Preparation method: in vitro, wheat germ expression system Product Quality tested by: 12.5% SDS-PAGE Stained with Coomassie Blue.
Restrictions:	For Research Use only

Handling

Buffer:	50 mM Tris-HCl, 10 mM reduced Glutathione, pH =8.0 in the elution buffer.
Handling Advice:	Aliquot to avoid repeated freezing and thawing.
Storage:	-80 °C
Storage Comment:	Best use within three months from the date of receipt of this protein.

Images

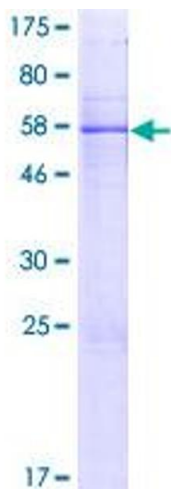


Image 1.