

Datasheet for ABIN1311554

**MTHFD1L Protein (AA 1-366) (GST tag)**[Go to Product page](#)**1** Image

## Overview

Quantity:	10 µg
Target:	MTHFD1L
Protein Characteristics:	AA 1-366
Origin:	Human
Source:	Wheat germ
Protein Type:	Recombinant
Purification tag / Conjugate:	This MTHFD1L protein is labelled with GST tag.
Application:	ELISA, Western Blotting (WB), Affinity Purification (AP), Antibody Array (AA)

## Product Details

Purpose:	MTHFD1L (Human) Recombinant Protein (P01)
Sequence:	MAVLALTDSL ADMKARLGRM VVASDKSGQP VTADDLGVTG ALTVLMKDAI KPNLMQTLEG TPVFBHAGPF ANIAHGNSV LADKIALKLV GEEGFVVTEA GFGADIGMEK FFIKCRASG LVPNVVVLVA TVRALKMHGG GPSVTAGVPL KKEYTEENIQ LVADGCCNLQ KQIQITQLFG VPVVVALNVF KTDTRAEIDL VCELAKRAGA FDAVPCYHWS VGGKGSVDLA RAVREAASKR SRFQFLYDVQ VPIVDKIRTI AQAVYGAKDI ELSPEAQAKI DRYTQQGFGN LPICMAKTHL SLSHQPDKKG VPRDFILPIS DVRASIGAGF IYPLVGTMST MPGLPTRPCF YDIDLDTETE QVKGLF
Characteristics:	Human MTHFD1L full-length ORF ( AAH08629.1, 1 a.a. - 366 a.a.) recombinant protein with GST-tag at N-terminal.
Purification:	in vitro wheat germ expression system

## Target Details

Target:	MTHFD1L
Alternative Name:	MTHFD1L ( <a href="#">MTHFD1L Products</a> )
Background:	Full Gene Name: methylenetetrahydrofolate dehydrogenase (NADP+ dependent) 1-like Synonyms: DKFZp586G1517,FLJ21145,FTHFSDC1,MTC1THFS,dJ292B18.2
Gene ID:	25902

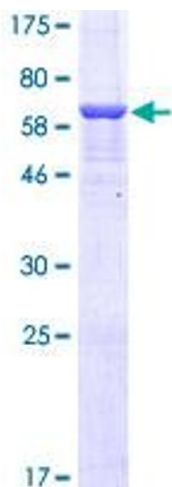
## Application Details

Application Notes:	Optimal working dilution should be determined by the investigator.
Comment:	Preparation method: in vitro, wheat germ expression system Product Quality tested by: 12.5% SDS-PAGE Stained with Coomassie Blue.
Restrictions:	For Research Use only

## Handling

Buffer:	50 mM Tris-HCl, 10 mM reduced Glutathione, pH =8.0 in the elution buffer.
Handling Advice:	Aliquot to avoid repeated freezing and thawing.
Storage:	-80 °C
Storage Comment:	Best use within three months from the date of receipt of this protein.

## Images



**Image 1.**