



[Go to Product page](#)

Datasheet for ABIN1311558

MTHFD2 Protein (AA 16-344) (GST tag)

1 Image

Overview

| | |
|-------------------------------|---|
| Quantity: | 10 µg |
| Target: | MTHFD2 |
| Protein Characteristics: | AA 16-344 |
| Origin: | Human |
| Source: | Wheat germ |
| Protein Type: | Recombinant |
| Purification tag / Conjugate: | This MTHFD2 protein is labelled with GST tag. |
| Application: | ELISA, Western Blotting (WB), Affinity Purification (AP), Antibody Array (AA) |

Product Details

| | |
|------------------|--|
| Purpose: | MTHFD2 (Human) Recombinant Protein (P01) |
| Sequence: | SLRLRPFHLA AVRNEAVVIS GRKLAQQIKQ EVRQEVEEWV ASGNKRPHLS VILVGENPAS HSYVLNKTRA AAVVGINSET IMKPASISEE ELLNLINKLN NDDNVDGLLV QLPLPEHIDE RRICNAVSPD KDVDGFHVIN VGRMCLDQYS MLPATPWGVW EIKRTGIPT LGKNVVVAGR SKNVGMPIAM LLHTDGAHER PGGDATVTIS HRYTPKEQLK KHTILADIVI SAAGIPNLIT ADMIKEGAAV IDVGINRVHD PVTAKPKLVG DVDFEGVRQK AGYITPVP GG VGPMTVAMLM KNTIIAAKKV LRLEEREVLK SKELGVATN |
| Characteristics: | Human MTHFD2 full-length ORF (AAH01548, 16 a.a. - 344 a.a.) recombinant protein with GST-tag at N-terminal. |
| Purification: | in vitro wheat germ expression system |

Target Details

| | |
|-------------------|---|
| Target: | MTHFD2 |
| Alternative Name: | MTHFD2 (MTHFD2 Products) |
| Background: | Full Gene Name: methylenetetrahydrofolate dehydrogenase (NADP+ dependent) 2, methenyltetrahydrofolate cyclohydrolase Synonyms: NMDMC |
| Gene ID: | 10797 |

Application Details

| | |
|--------------------|--|
| Application Notes: | Optimal working dilution should be determined by the investigator. |
| Comment: | Preparation method: in vitro, wheat germ expression system Product Quality tested by: 12.5% SDS-PAGE Stained with Coomassie Blue. |
| Restrictions: | For Research Use only |

Handling

| | |
|------------------|---|
| Buffer: | 50 mM Tris-HCl, 10 mM reduced Glutathione, pH =8.0 in the elution buffer. |
| Handling Advice: | Aliquot to avoid repeated freezing and thawing. |
| Storage: | -80 °C |
| Storage Comment: | Best use within three months from the date of receipt of this protein. |

Images

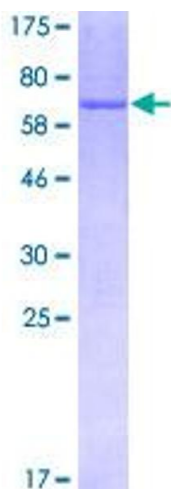


Image 1.