



[Go to Product page](#)

Datasheet for ABIN1311560

## MTHFD2L Protein (AA 1-146) (GST tag)

### 1 Image

#### Overview

Quantity:	10 µg
Target:	MTHFD2L
Protein Characteristics:	AA 1-146
Origin:	Human
Source:	Wheat germ
Protein Type:	Recombinant
Purification tag / Conjugate:	This MTHFD2L protein is labelled with GST tag.
Application:	ELISA, Western Blotting (WB), Affinity Purification (AP), Antibody Array (AA)

#### Product Details

Purpose:	MTHFD2L (Human) Recombinant Protein (P01)
Sequence:	MDPRVSGILV QLPLPDHVDE RTICNGIAPE KDVDGFHIIN IGRLCLDQHS LIPATASAVW EIIKRTGIQT FGKNVVVAGR SKNVGMPIAM LLHTDGEHER PGGDATVTIA HRYTPKEQLK IHTQLADIII VAAERFHHFA QDLSNS
Characteristics:	Human MTHFD2L full-length ORF ( AAH32771.1, 1 a.a. - 146 a.a.) recombinant protein with GST-tag at N-terminal.
Purification:	in vitro wheat germ expression system

#### Target Details

Target:	MTHFD2L
Alternative Name:	MTHFD2L ( <a href="#">MTHFD2L Products</a> )

## Target Details

Background:	Full Gene Name: methylenetetrahydrofolate dehydrogenase (NADP+ dependent) 2-like Synonyms: FLJ13105,MGC45532,MGC72244
Gene ID:	441024

## Application Details

Application Notes:	Optimal working dilution should be determined by the investigator.
Comment:	Preparation method: in vitro, wheat germ expression system Product Quality tested by: 12.5% SDS-PAGE Stained with Coomassie Blue.
Restrictions:	For Research Use only

## Handling

Buffer:	50 mM Tris-HCl, 10 mM reduced Glutathione, pH =8.0 in the elution buffer.
Handling Advice:	Aliquot to avoid repeated freezing and thawing.
Storage:	-80 °C
Storage Comment:	Best use within three months from the date of receipt of this protein.

## Images

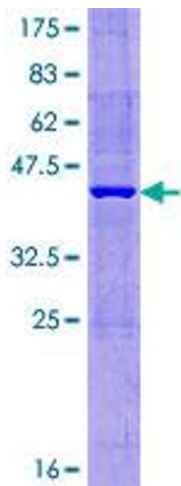


Image 1.