



[Go to Product page](#)

Datasheet for ABIN1311564

MTHFS Protein (AA 104-203) (GST tag)

1 Image

Overview

Quantity:	10 µg
Target:	MTHFS
Protein Characteristics:	AA 104-203
Origin:	Human
Source:	Wheat germ
Protein Type:	Recombinant
Purification tag / Conjugate:	This MTHFS protein is labelled with GST tag.
Application:	ELISA, Western Blotting (WB), Affinity Purification (AP), Antibody Array (AA)

Product Details

Purpose:	MTHFS (Human) Recombinant Protein (Q01)
Sequence:	LPKTSWNIPQ PEGGDVREEA LSTGGLDLIF MPGLGFDKHG NRLGRGKGYG DAYLKRCLQH QEVKPYTLAL AFKEQICLQV PVNENDMKVD EVLYEDSSTA
Characteristics:	Human MTHFS partial ORF (NP_006432, 104 a.a. - 203 a.a.) recombinant protein with GST-tag at N-terminal.
Purification:	in vitro wheat germ expression system

Target Details

Target:	MTHFS
Alternative Name:	MTHFS (MTHFS Products)

Target Details

Background:	Gene: 5,10-methenyltetrahydrofolate synthetase (5-formyltetrahydrofolate cyclo-ligase) Synonyms: FLJ30410, HsT19268
Gene ID:	10588
NCBI Accession:	NM_006441

Application Details

Application Notes:	Optimal working dilution should be determined by the investigator.
Restrictions:	For Research Use only

Handling

Buffer:	50 mM Tris-HCl, 10 mM reduced Glutathione, pH =8.0 in the elution buffer.
Handling Advice:	Aliquot to avoid repeated freezing and thawing.
Storage:	-80 °C
Storage Comment:	Best use within three months from the date of receipt of this protein.

Images

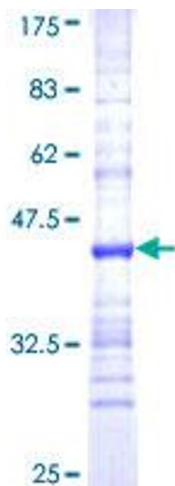


Image 1.