

Datasheet for ABIN1311590

MTMR3 Protein (AA 579-674) (GST tag)



[Go to Product page](#)

1 Image

Overview

Quantity:	10 µg
Target:	MTMR3
Protein Characteristics:	AA 579-674
Origin:	Human
Source:	Wheat germ
Protein Type:	Recombinant
Purification tag / Conjugate:	This MTMR3 protein is labelled with GST tag.
Application:	ELISA, Western Blotting (WB), Affinity Purification (AP), Antibody Array (AA)

Product Details

Purpose:	MTMR3 (Human) Recombinant Protein (Q01)
Sequence:	CPSPTTPVDD SCAPYPAPGT SPDDPPLSRL PKTRSYDNLT TACDNTVPLA SRRCS DPSLN EKWQEHRRSL ELSSLAGPGE DPLSADSLGK PTRVPG
Characteristics:	Human MTMR3 partial ORF (NP_066576.1, 579 a.a. - 674 a.a.) recombinant protein with GST-tag at N-terminal.
Purification:	in vitro wheat germ expression system

Target Details

Target:	MTMR3
Alternative Name:	MTMR3 (MTMR3 Products)

Target Details

Background:	Full Gene Name: myotubularin related protein 3 Synonyms: FLJ32333,FYVE-DSP1,KIAA0371,ZFYVE10
Gene ID:	8897
NCBI Accession:	NM_021090
Pathways:	Inositol Metabolic Process

Application Details

Application Notes:	Optimal working dilution should be determined by the investigator.
Comment:	Preparation method: in vitro, wheat germ expression system Product Quality tested by: 12.5% SDS-PAGE Stained with Coomassie Blue.
Restrictions:	For Research Use only

Handling

Buffer:	50 mM Tris-HCl, 10 mM reduced Glutathione, pH =8.0 in the elution buffer.
Handling Advice:	Aliquot to avoid repeated freezing and thawing.
Storage:	-80 °C
Storage Comment:	Best use within three months from the date of receipt of this protein.

Images

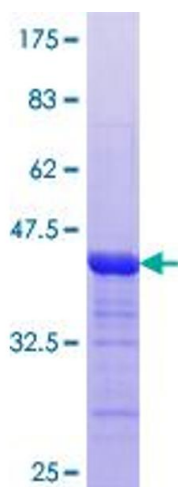


Image 1.