

Datasheet for ABIN1311592

MTMR6 Protein (AA 1-621) (GST tag)



[Go to Product page](#)

1 Image

Overview

Quantity:	25 µg
Target:	MTMR6
Protein Characteristics:	AA 1-621
Origin:	Human
Source:	Wheat germ
Protein Type:	Recombinant
Purification tag / Conjugate:	This MTMR6 protein is labelled with GST tag.
Application:	ELISA, Western Blotting (WB), Affinity Purification (AP), Antibody Array (AA)

Product Details

Purpose:	MTMR6 (Human) Recombinant Protein (P01)
Sequence:	MEHIRTTKVE QVKLLDRFST SNKSLTGTLY LTATHLLFID SHQKETWILH HHIASVEKLA LTTSGCPLVI QCKNFRTVHF IVPRERDCHD IYNSLLQLSK QAKYEDLYAF SYNPKQNDSE RLQGWQLIDL AEEYKRMGVP NSHWQLSDAN RDYKICETYP RELYVPRIAS KPIIVGSSKF RSKGRFPVLS YYHQDKEAAI CRCSQPLSGF SARCLEDEHL LQAISKANPV NRYMYVMDTR PKLNAMANRA AGKGYENEDN YSNIRFQFVG IENIHVMRSS LQKLEVNGT KGLSVNDFYS GLESSGWL RH IKAVMDAAVF LAKAITVENA SVLVHCSDGW DRTSQVCSLG SLLDSSYYRT IKGFMV LIEK DWISFGHKFS ERCGQLD GDP KEVSPVFTQF LECVWHLTEQ FPQAFEFSEA FLLQIHEHIH SCQFGN FLGN CQKEREELKL KEKTYSLWPF LLEDQKKYLN PLYSSESHRF TVLEPNTVSF NFKFWRNMYH QFDRTLHPRQ SVFNII MNMN EQNKQLEKDI KDLESKIQOR KNKQTDGILT KELLHSVHPE SPNLKTS LCF KEQTL LPVND ALRTIEGSSP ADNRYSEYAE EFSKSEPAVV SLEYGVARMT C

Product Details

Characteristics: Human MTMR6 full-length ORF (AAH40012, 1 a.a. - 621 a.a.) recombinant protein with GST-tag at N-terminal.

Purification: in vitro wheat germ expression system

Target Details

Target: MTMR6

Alternative Name: MTMR6 ([MTMR6 Products](#))

Background: Full Gene Name: myotubularin related protein 6
Synonyms:

Gene ID: 9107

Pathways: [Inositol Metabolic Process](#)

Application Details

Application Notes: Optimal working dilution should be determined by the investigator.

Comment: Preparation method: in vitro, wheat germ expression system
Product Quality tested by: 12.5% SDS-PAGE Stained with Coomassie Blue.

Restrictions: For Research Use only

Handling

Buffer: 50 mM Tris-HCl, 10 mM reduced Glutathione, pH =8.0 in the elution buffer.

Handling Advice: Aliquot to avoid repeated freezing and thawing.

Storage: -80 °C

Storage Comment: Best use within three months from the date of receipt of this protein.

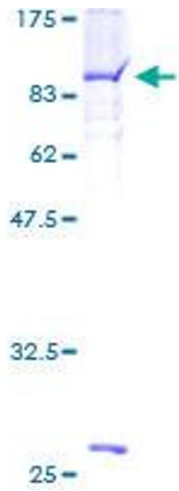


Image 1.