



[Go to Product page](#)

Datasheet for ABIN1311597

MTMR9 Protein (AA 450-549) (GST tag)

1 Image

Overview

Quantity:	10 µg
Target:	MTMR9
Protein Characteristics:	AA 450-549
Origin:	Human
Source:	Wheat germ
Protein Type:	Recombinant
Purification tag / Conjugate:	This MTMR9 protein is labelled with GST tag.
Application:	Western Blotting (WB), ELISA, Affinity Purification (AP), Antibody Array (AA)

Product Details

Purpose:	MTMR9 (Human) Recombinant Protein (Q01)
Sequence:	LQQKTMSLWS WVNQPSELSK FTNPLFEANN LVIWPSVAPQ SLPLWEGIFL RWNRSSKYLD EAYEEMVNII EYNKELQAKV NILRRQLAEL ETEDGMQESP
Characteristics:	Human MTMR9 partial ORF (NP_056273, 450 a.a. - 549 a.a.) recombinant protein with GST-tag at N-terminal.
Purification:	in vitro wheat germ expression system

Target Details

Target:	MTMR9
Alternative Name:	MTMR9 (MTMR9 Products)

Target Details

Background:	Full Gene Name: myotubularin related protein 9 Synonyms: C8orf9,DKFZp434K171,LIP-STYX,MGC126672,MTMR8
Gene ID:	66036
NCBI Accession:	NM_015458

Application Details

Application Notes:	Optimal working dilution should be determined by the investigator.
Comment:	Preparation method: in vitro, wheat germ expression system Product Quality tested by: 12.5% SDS-PAGE Stained with Coomassie Blue.
Restrictions:	For Research Use only

Handling

Buffer:	50 mM Tris-HCl, 10 mM reduced Glutathione, pH =8.0 in the elution buffer.
Handling Advice:	Aliquot to avoid repeated freezing and thawing.
Storage:	-80 °C
Storage Comment:	Best use within three months from the date of receipt of this protein.

Images

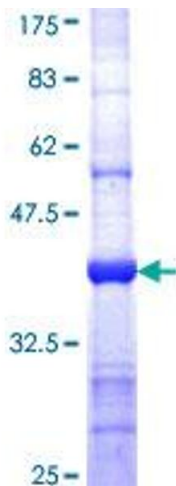


Image 1.