

Datasheet for ABIN1311615

MTRR Protein (AA 1-110) (GST tag)[Go to Product page](#)**1** Image

Overview

Quantity:	10 µg
Target:	MTRR
Protein Characteristics:	AA 1-110
Origin:	Human
Source:	Wheat germ
Protein Type:	Recombinant
Purification tag / Conjugate:	This MTRR protein is labelled with GST tag.
Application:	Western Blotting (WB), ELISA, Affinity Purification (AP), Antibody Array (AA)

Product Details

Purpose:	MTRR (Human) Recombinant Protein (Q01)
Sequence:	MRRFLLLYAT QQGQAKAIAE EMCEQAVVHG FSADLHCISE SDKYDLKTET APLVVVVSTT GTGDPPDTAR KVFKEIQNQT LPVDFFAHLR YGLLG LGDSE YTYFCNGGKI
Characteristics:	Human MTRR partial ORF (NP_002445, 1 a.a. - 110 a.a.) recombinant protein with GST-tag at N-terminal.
Purification:	in vitro wheat germ expression system

Target Details

Target:	MTRR
Alternative Name:	MTRR (MTRR Products)

Target Details

Background:	Full Gene Name: 5-methyltetrahydrofolate-homocysteine methyltransferase reductase Synonyms: MGC129643,MSR
Gene ID:	4552
NCBI Accession:	NM_002454
Pathways:	Methionine Biosynthetic Process

Application Details

Application Notes:	Optimal working dilution should be determined by the investigator.
Comment:	Preparation method: in vitro, wheat germ expression system Product Quality tested by: 12.5% SDS-PAGE Stained with Coomassie Blue.
Restrictions:	For Research Use only

Handling

Buffer:	50 mM Tris-HCl, 10 mM reduced Glutathione, pH =8.0 in the elution buffer.
Handling Advice:	Aliquot to avoid repeated freezing and thawing.
Storage:	-80 °C
Storage Comment:	Best use within three months from the date of receipt of this protein.

Images

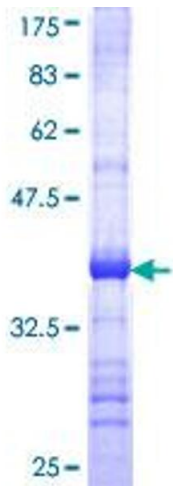


Image 1.