



[Go to Product page](#)

Datasheet for ABIN1311617

## MTSS1 Protein (AA 346-445) (GST tag)

### 1 Image

#### Overview

Quantity:	10 µg
Target:	MTSS1
Protein Characteristics:	AA 346-445
Origin:	Human
Source:	Wheat germ
Protein Type:	Recombinant
Purification tag / Conjugate:	This MTSS1 protein is labelled with GST tag.
Application:	ELISA, Western Blotting (WB), Affinity Purification (AP), Antibody Array (AA)

#### Product Details

Purpose:	MTSS1 (Human) Recombinant Protein (Q01)
Sequence:	GVLPPAPDGP EERGEHSPES PSVGEGPQGV TSMPSSMWSG QASVNPPLPG PKPSIPEEHR QAIPESEAED QEREPPSATV SPGQIPESDP ADLSPRDTPQ
Characteristics:	Human MTSS1 partial ORF ( AAH23998, 346 a.a. - 445 a.a.) recombinant protein with GST-tag at N-terminal.
Purification:	in vitro wheat germ expression system

#### Target Details

Target:	MTSS1
Alternative Name:	MTSS1 ( <a href="#">MTSS1 Products</a> )

## Target Details

Background:	Full Gene Name: metastasis suppressor 1 Synonyms: DKFZp781P2223,FLJ44694,KIAA0429,MIM,MIMA,MIMB
Gene ID:	9788

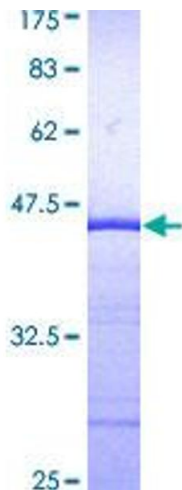
## Application Details

Application Notes:	Optimal working dilution should be determined by the investigator.
Comment:	Preparation method: in vitro, wheat germ expression system Product Quality tested by: 12.5% SDS-PAGE Stained with Coomassie Blue.
Restrictions:	For Research Use only

## Handling

Buffer:	50 mM Tris-HCl, 10 mM reduced Glutathione, pH =8.0 in the elution buffer.
Handling Advice:	Aliquot to avoid repeated freezing and thawing.
Storage:	-80 °C
Storage Comment:	Best use within three months from the date of receipt of this protein.

## Images



**Image 1.**