

Datasheet for ABIN1311639
MUC20 Protein (AA 1-538) (GST tag)



[Go to Product page](#)

1 Image

Overview

Quantity:	25 µg
Target:	MUC20
Protein Characteristics:	AA 1-538
Origin:	Human
Source:	Wheat germ
Protein Type:	Recombinant
Purification tag / Conjugate:	This MUC20 protein is labelled with GST tag.
Application:	Western Blotting (WB), ELISA, Affinity Purification (AP), Antibody Array (AA)

Product Details

Purpose:	MUC20 (Human) Recombinant Protein (P01)
Sequence:	MGCLWGLALP LFFFCWEVGV SGSSAGPSTR RADTAMTTDD TEVPAMTLAP GHAALETQTL SAETSSRAST PAGPIPEAET RGAKRISPAR ETRSFTKTSP NFMVLIATSV ETSAAAGSPE GAGMTTVQTI TGSDPEEAIF DTLCTDDSSE EAKLTMMDIL TLAHTSTEAK GLSSESSASS DGPHPVITPS RASESSASSD GPHPVITPSR ACESSASSDG PHPVITPSWS PGSDVTLLE ALVTVTNIEV INCSITEIET TTSSIPGASD IDLIPTGVK ASSTSDPPAL PDSTEAKPHI TEVTASAETL STAGTTESAA PHATVGTPLP TNSATEREVT APGATTLSGA LTVSRNPLE ETSALSVETP SYVKVSGAAP VSIEAGSAVG KTTSFAGSSA SSYSPSEAAL KNFTPSETPT MDIATKGPFP TSRDPLPSVP PTTTNSRGT NSTLAKITTS AKTTMKPPTA TPTTARTRPT TDVSAGENGG FLLRLSVAS PEDLTDPRVA ERLMQQLHRE LHAHAPHFQV SLLRVRRG
Characteristics:	Human MUC20 full-length ORF (AAH44243.1, 1 a.a. - 538 a.a.) recombinant protein with GST-tag at N-terminal.

Product Details

Purification: in vitro wheat germ expression system

Target Details

Target: MUC20

Alternative Name: MUC20 ([MUC20 Products](#))

Background: Full Gene Name: mucin 20, cell surface associated
Synonyms: FLJ14408,KIAA1359

Gene ID: 200958

Application Details

Application Notes: Optimal working dilution should be determined by the investigator.

Comment: Preparation method: in vitro, wheat germ expression system
Product Quality tested by: 12.5% SDS-PAGE Stained with Coomassie Blue.

Restrictions: For Research Use only

Handling

Buffer: 50 mM Tris-HCl, 10 mM reduced Glutathione, pH =8.0 in the elution buffer.

Handling Advice: Aliquot to avoid repeated freezing and thawing.

Storage: -80 °C

Storage Comment: Best use within three months from the date of receipt of this protein.

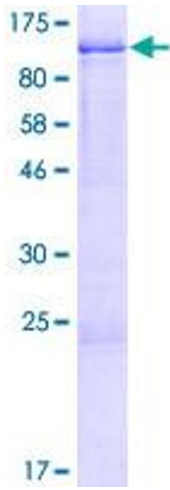


Image 1.