



[Go to Product page](#)

Datasheet for ABIN1311650

MUM1L1 Protein (AA 1-425) (GST tag)

1 Image

Overview

Quantity:	10 µg
Target:	MUM1L1
Protein Characteristics:	AA 1-425
Origin:	Human
Source:	Wheat germ
Protein Type:	Recombinant
Purification tag / Conjugate:	This MUM1L1 protein is labelled with GST tag.
Application:	ELISA, Western Blotting (WB), Affinity Purification (AP), Antibody Array (AA)

Product Details

Purpose:	MUM1L1 (Human) Recombinant Protein (P01)
Sequence:	MESEYVLCNW KDQLWPAKVL SRSETSSNSK RKKAFSLEVQ ILSLDEKIKL DSTETKILNK SQIEAIAASL GLQSEDSAPP TEETAYGRSL KVALGILNER TNLSQASTSD EEEITMLSQN VPQKQSDSPP HKKYRKDEGD LPGCLEEREN SACLLASSES DDSLYDDKSQ APTMVDTIPS EVETKSLQNS SWCETFPSLS EDNDEKENKN KIDISAVMSV HSAVKEESAC VKDEKFAPPL SPLSSDMLIM PKALKEESED TCLET LAVPS ECSAFSENIE DPGEGPSNPC LDTSQNQPSM ESEMGAACP GSCSRECEVS FSASNPVWDY SHLMSSERNF QRLDFEELEE EGQASDKSLL PSRINLSLLD DDEEDEELPR FILHYETHPF ETGMIVWFKY QKYPFLASSD KKYQTKREES KCAFC
Characteristics:	Human MUM1L1 full-length ORF (AAH31229.1, 1 a.a. - 425 a.a.) recombinant protein with GST-tag at N-terminal.
Purification:	in vitro wheat germ expression system

Target Details

Target:	MUM1L1
Alternative Name:	MUM1L1 (MUM1L1 Products)
Background:	Full Gene Name: melanoma associated antigen (mutated) 1-like 1 Synonyms: FLJ33516,MGC129994,MGC129995
Gene ID:	139221

Application Details

Application Notes:	Optimal working dilution should be determined by the investigator.
Comment:	Preparation method: in vitro, wheat germ expression system Product Quality tested by: 12.5% SDS-PAGE Stained with Coomassie Blue.
Restrictions:	For Research Use only

Handling

Buffer:	50 mM Tris-HCl, 10 mM reduced Glutathione, pH =8.0 in the elution buffer.
Handling Advice:	Aliquot to avoid repeated freezing and thawing.
Storage:	-80 °C
Storage Comment:	Best use within three months from the date of receipt of this protein.

Images

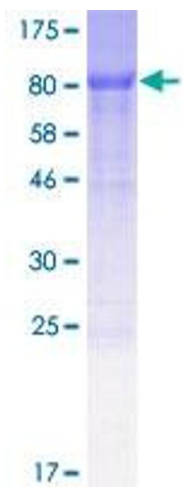


Image 1.