



[Go to Product page](#)

Datasheet for ABIN1311682

MX2 Protein (AA 521-620) (GST tag)

1 Image

Overview

Quantity:	10 µg
Target:	MX2
Protein Characteristics:	AA 521-620
Origin:	Human
Source:	Wheat germ
Protein Type:	Recombinant
Purification tag / Conjugate:	This MX2 protein is labelled with GST tag.
Application:	Western Blotting (WB), ELISA, Affinity Purification (AP), Antibody Array (AA)

Product Details

Purpose:	MX2 (Human) Recombinant Protein (Q01)
Sequence:	QKAMEIIQQA FINVAKKHFG EFFNLNQTQVQ STIEDIKVKH TAKAENMIQL QFRMEQMVFC QDQIYSVVLK KVREEIFNPL GTPSQNMKLN SHFPSNESSV
Characteristics:	Human MX2 partial ORF (NP_002454.1, 521 a.a. - 620 a.a.) recombinant protein with GST-tag at N-terminal.
Purification:	in vitro wheat germ expression system

Target Details

Target:	MX2
Alternative Name:	MX2 (MX2 Products)

Target Details

Background:	Full Gene Name: myxovirus (influenza virus) resistance 2 (mouse) Synonyms: MXB
Gene ID:	4600
NCBI Accession:	NM_002463

Application Details

Application Notes:	Optimal working dilution should be determined by the investigator.
Comment:	Preparation method: in vitro, wheat germ expression system Product Quality tested by: 12.5% SDS-PAGE Stained with Coomassie Blue.
Restrictions:	For Research Use only

Handling

Buffer:	50 mM Tris-HCl, 10 mM reduced Glutathione, pH =8.0 in the elution buffer.
Handling Advice:	Aliquot to avoid repeated freezing and thawing.
Storage:	-80 °C
Storage Comment:	Best use within three months from the date of receipt of this protein.

Images

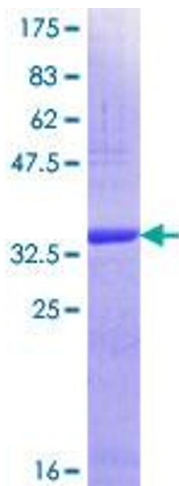


Image 1.