



[Go to Product page](#)

Datasheet for ABIN1311704

MYBL1 Protein (AA 625-734) (GST tag)

1 Image

Overview

Quantity:	10 µg
Target:	MYBL1
Protein Characteristics:	AA 625-734
Origin:	Human
Source:	Wheat germ
Protein Type:	Recombinant
Purification tag / Conjugate:	This MYBL1 protein is labelled with GST tag.
Application:	ELISA, Western Blotting (WB), Affinity Purification (AP), Antibody Array (AA)

Product Details

Purpose:	MYBL1 (Human) Recombinant Protein (Q01)
Sequence:	KSLVLDNWEK EESGTQLLTE DISDMQSENR FTTSLLMIPL LEIHDNRCNL IPEKQDINST NKTYTLTKKK PNPNTSKVVK LEKNLQSNCE WETVVYGKTE DQLIMTEQAR
Characteristics:	Human MYBL1 partial ORF (XP_034274, 625 a.a. - 734 a.a.) recombinant protein with GST-tag at N-terminal.
Purification:	in vitro wheat germ expression system

Target Details

Target:	MYBL1
Alternative Name:	MYBL1 (MYBL1 Products)

Target Details

Background:	Full Gene Name: v-myb myeloblastosis viral oncogene homolog (avian)-like 1 Synonyms: A-MYB, AMYB, MGC120059, MGC120061
Gene ID:	4603
NCBI Accession:	XM_034274
Pathways:	Cell Division Cycle , Chromatin Binding

Application Details

Application Notes:	Optimal working dilution should be determined by the investigator.
Comment:	Preparation method: in vitro, wheat germ expression system Product Quality tested by: 12.5% SDS-PAGE Stained with Coomassie Blue.
Restrictions:	For Research Use only

Handling

Buffer:	50 mM Tris-HCl, 10 mM reduced Glutathione, pH =8.0 in the elution buffer.
Handling Advice:	Aliquot to avoid repeated freezing and thawing.
Storage:	-80 °C
Storage Comment:	Best use within three months from the date of receipt of this protein.

Images

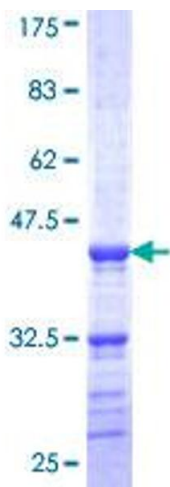


Image 1.