



[Go to Product page](#)

Datasheet for ABIN1311733

MYD88 Protein (AA 31-130) (GST tag)

1 Image

Overview

Quantity:	10 µg
Target:	MYD88
Protein Characteristics:	AA 31-130
Origin:	Human
Source:	Wheat germ
Protein Type:	Recombinant
Purification tag / Conjugate:	This MYD88 protein is labelled with GST tag.
Application:	Western Blotting (WB), ELISA, Affinity Purification (AP), Antibody Array (AA)

Product Details

Purpose:	MYD88 (Human) Recombinant Protein (Q01)
Sequence:	RRLSLFLNVR TQVAADWTAL AEEMDFEYLE IRQLETQADP TGRLLDAWQG RPGASVGRLLELLTKLGRDD VLLELGPSIE EDCQKYILKQ QEEAEKPLQ
Characteristics:	Human MYD88 partial ORF (AAH13589, 31 a.a. - 130 a.a.) recombinant protein with GST-tag at N-terminal.
Purification:	in vitro wheat germ expression system

Target Details

Target:	MYD88
Alternative Name:	MYD88 (MYD88 Products)

Target Details

Background:	Full Gene Name: myeloid differentiation primary response gene (88) Synonyms: MYD88D
Gene ID:	4615
Pathways:	NF-kappaB Signaling , TLR Signaling , Neurotrophin Signaling Pathway , Activation of Innate immune Response , Cellular Response to Molecule of Bacterial Origin , Positive Regulation of Immune Effector Process , Production of Molecular Mediator of Immune Response , Toll-Like Receptors Cascades

Application Details

Application Notes:	Optimal working dilution should be determined by the investigator.
Comment:	Preparation method: in vitro, wheat germ expression system Product Quality tested by: 12.5% SDS-PAGE Stained with Coomassie Blue.
Restrictions:	For Research Use only

Handling

Buffer:	50 mM Tris-HCl, 10 mM reduced Glutathione, pH =8.0 in the elution buffer.
Handling Advice:	Aliquot to avoid repeated freezing and thawing.
Storage:	-80 °C
Storage Comment:	Best use within three months from the date of receipt of this protein.

Images

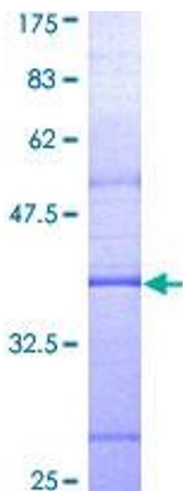


Image 1.