



[Go to Product page](#)

Datasheet for ABIN1311737

MYEOV Protein (AA 1-313) (GST tag)

1 Image

Overview

Quantity:	10 µg
Target:	MYEOV
Protein Characteristics:	AA 1-313
Origin:	Human
Source:	Wheat germ
Protein Type:	Recombinant
Purification tag / Conjugate:	This MYEOV protein is labelled with GST tag.
Application:	ELISA, Western Blotting (WB), Antibody Array (AA), Affinity Purification (AP)

Product Details

Purpose:	MYEOV (Human) Recombinant Protein (P01)
Sequence:	MALRICVTYT PALPIGLCTR CCLCLEQSPS WCHCLRGVSF LTFHLHQSVPLGDRDSLLMF TRQAGHFVEG SKAGRSRGRLLCLSQUALRVAV RGAFVSLWFA AGAGDRERNK GDKGAQTGAG LSQEAEDVDV SRARRVTDAP QGTLCGTGNR NSGSQSARAV GVAHLGEAFR VGVEQAISSC PEEVHGRHGL SMEIMWARMD VALRSPGRGL LAGAGALCVT LAESSCPDYE RGRRACLTLH RHPTPHCSTW GLPLRVAGSW LTVVTVEALG GWRMGVRRRTG QVGPTMHPPP VSGASPLLLH HLLLLLLIII LTC
Characteristics:	Human MYEOV full-length ORF (AAH11815.1, 1 a.a. - 313 a.a.) recombinant protein with GST-tag at N-terminal.
Purification:	in vitro wheat germ expression system

Target Details

Target:	MYEOV
Alternative Name:	MYEOV (MYEOV Products)
Background:	Full Gene Name: myeloma overexpressed (in a subset of t(11,14) positive multiple myelomas) Synonyms: OCIM
Gene ID:	26579

Application Details

Application Notes:	Optimal working dilution should be determined by the investigator.
Comment:	Preparation method: in vitro, wheat germ expression system Product Quality tested by: 12.5% SDS-PAGE Stained with Coomassie Blue.
Restrictions:	For Research Use only

Handling

Buffer:	50 mM Tris-HCl, 10 mM reduced Glutathione, pH =8.0 in the elution buffer.
Handling Advice:	Aliquot to avoid repeated freezing and thawing.
Storage:	-80 °C
Storage Comment:	Best use within three months from the date of receipt of this protein.

Images

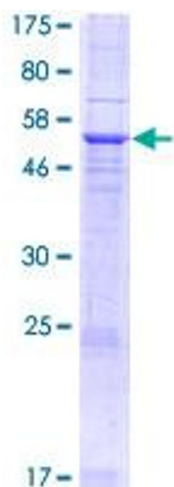


Image 1.