



[Go to Product page](#)

Datasheet for ABIN1311748

## MYH7 Protein (AA 1-109) (GST tag)

### 1 Image

#### Overview

Quantity:	10 µg
Target:	MYH7
Protein Characteristics:	AA 1-109
Origin:	Human
Source:	Wheat germ
Protein Type:	Recombinant
Purification tag / Conjugate:	This MYH7 protein is labelled with GST tag.
Application:	Western Blotting (WB), ELISA, Affinity Purification (AP), Antibody Array (AA)

#### Product Details

Purpose:	MYH7 (Human) Recombinant Protein (Q01)
Sequence:	MGDSEMAVFG AAAPYLKSE KERLEAQTRP FDLKKDVFVP DDKQEFVKAK IVSREGGKVT AETEYGKTVT VKEDQVMQQN PPKFDKIEDM AMLTFLHEPA VLYNLKDRY
Characteristics:	Human MYH7 partial ORF ( NP_000248, 1 a.a. - 109 a.a.) recombinant protein with GST-tag at N-terminal.
Purification:	in vitro wheat germ expression system

#### Target Details

Target:	MYH7
Alternative Name:	MYH7 ( <a href="#">MYH7 Products</a> )

## Target Details

Background:	Full Gene Name: myosin, heavy chain 7, cardiac muscle, beta Synonyms: CMD1S,CMH1,DKFZp451F047,MGC138376,MGC138378,MPD1,MYHCB,SPMD,SPMM
Gene ID:	4625
NCBI Accession:	<a href="#">NM_000257</a>

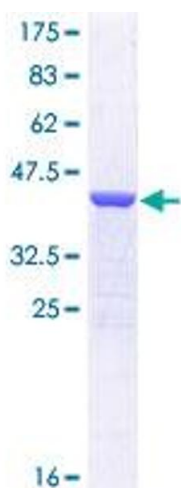
## Application Details

Application Notes:	Optimal working dilution should be determined by the investigator.
Comment:	Preparation method: in vitro, wheat germ expression system Product Quality tested by: 12.5% SDS-PAGE Stained with Coomassie Blue.
Restrictions:	For Research Use only

## Handling

Buffer:	50 mM Tris-HCl, 10 mM reduced Glutathione, pH =8.0 in the elution buffer.
Handling Advice:	Aliquot to avoid repeated freezing and thawing.
Storage:	-80 °C
Storage Comment:	Best use within three months from the date of receipt of this protein.

## Images



**Image 1.**