



[Go to Product page](#)

Datasheet for ABIN1311777

MYL6B Protein (AA 109-208) (GST tag)

1 Image

Overview

Quantity:	10 µg
Target:	MYL6B
Protein Characteristics:	AA 109-208
Origin:	Human
Source:	Wheat germ
Protein Type:	Recombinant
Purification tag / Conjugate:	This MYL6B protein is labelled with GST tag.
Application:	Western Blotting (WB), ELISA, Affinity Purification (AP), Antibody Array (AA)

Product Details

Purpose:	MLC1SA (Human) Recombinant Protein (Q01)
Sequence:	LGNPKSDELK SRRVDFETFL PMLQAVAKNR GQGTYEDYLE GFRVFDKEGN GKVMGAELRH VLTTLGEKMT EEEVETVLAG HEDSNGCINY EAFLKHILSV
Characteristics:	Human MLC1SA partial ORF (NP_002466, 109 a.a. - 208 a.a.) recombinant protein with GST-tag at N-terminal.
Purification:	in vitro wheat germ expression system

Target Details

Target:	MYL6B
Alternative Name:	MYL6B (MYL6B Products)

Target Details

Background:	Full Gene Name: myosin, light chain 6B, alkali, smooth muscle and non-muscle Synonyms: MLC1SA
Gene ID:	140465
NCBI Accession:	NM_002475

Application Details

Application Notes:	Optimal working dilution should be determined by the investigator.
Comment:	Preparation method: in vitro, wheat germ expression system Product Quality tested by: 12.5% SDS-PAGE Stained with Coomassie Blue.
Restrictions:	For Research Use only

Handling

Buffer:	50 mM Tris-HCl, 10 mM reduced Glutathione, pH =8.0 in the elution buffer.
Handling Advice:	Aliquot to avoid repeated freezing and thawing.
Storage:	-80 °C
Storage Comment:	Best use within three months from the date of receipt of this protein.

Images

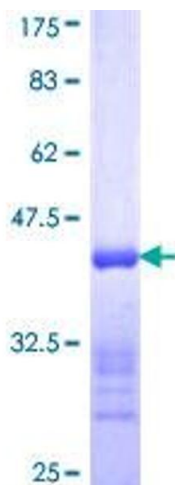


Image 1.