



[Go to Product page](#)

Datasheet for ABIN1311781

MYL10 Protein (AA 1-226) (GST tag)

1 Image

Overview

Quantity:	25 µg
Target:	MYL10
Protein Characteristics:	AA 1-226
Origin:	Human
Source:	Wheat germ
Protein Type:	Recombinant
Purification tag / Conjugate:	This MYL10 protein is labelled with GST tag.
Application:	ELISA, Western Blotting (WB), Affinity Purification (AP), Antibody Array (AA)

Product Details

Purpose:	MYLC2PL (Human) Recombinant Protein (P01)
Sequence:	MLLRLVSNWS PQVILPPRPP KVLGLQAPRR ARKRAEGTAS SNVFSMFDQS QIQEFKESLA LSPRLERNGM ISAHCNLCLT GSSNSPASAS QAFTIMDQNR DGFIDKEDLR DTFAALGRIN VKNEELEAMV KEAPGPINFT VFLTMFGEKL KGTDPPEETIL HAFKVFDTTEG KGFVKADVIK EKLMTQADRF SEEEVKQMFA AFPPDVCGNL DYRNLCYVIT HGEEKD
Characteristics:	Human MYLC2PL full-length ORF (NP_612412.2, 1 a.a. - 226 a.a.) recombinant protein with GST-tag at N-terminal.
Purification:	in vitro wheat germ expression system

Target Details

Target:	MYL10
---------	-------

Target Details

Alternative Name:	MYLC2PL (MYL10 Products)
Background:	Full Gene Name: myosin light chain 2, precursor lymphocyte-specific Synonyms: PLRLC
Gene ID:	93408
NCBI Accession:	NM_138403

Application Details

Application Notes:	Optimal working dilution should be determined by the investigator.
Comment:	Preparation method: in vitro, wheat germ expression system Product Quality tested by: 12.5% SDS-PAGE Stained with Coomassie Blue.
Restrictions:	For Research Use only

Handling

Buffer:	50 mM Tris-HCl, 10 mM reduced Glutathione, pH =8.0 in the elution buffer.
Handling Advice:	Aliquot to avoid repeated freezing and thawing.
Storage:	-80 °C
Storage Comment:	Best use within three months from the date of receipt of this protein.

Images

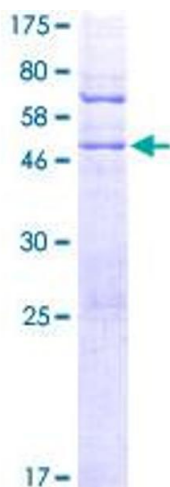


Image 1.