



[Go to Product page](#)

Datasheet for ABIN1311797

MYLPF Protein (AA 1-169) (GST tag)

1 Image

Overview

Quantity:	10 µg
Target:	MYLPF
Protein Characteristics:	AA 1-169
Origin:	Human
Source:	Wheat germ
Protein Type:	Recombinant
Purification tag / Conjugate:	This MYLPF protein is labelled with GST tag.
Application:	ELISA, Western Blotting (WB), Affinity Purification (AP), Antibody Array (AA)

Product Details

Purpose:	MYLPF (Human) Recombinant Protein (P01)
Sequence:	MAPKRAKRRT VEGGSSSVFS MFDQTQIQEF KEAFTVIDQN RDGIIDKEDL RDTFAAMGRL NVKNEELDAM MKEASGPINF TVFLTMFGEK LKGADPEDVI TGAFKVLDP E GKGTIKKKFL EELLTTQCDR FSQEEIKNMW AAFPPDVGGN VDYKNICYVI THGDAKDQE
Characteristics:	Human MYLPF full-length ORF (AAH12571, 1 a.a. - 169 a.a.) recombinant protein with GST-tag at N-terminal.
Purification:	in vitro wheat germ expression system

Target Details

Target:	MYLPF
Alternative Name:	MYLPF (MYLPF Products)

Target Details

Background:	Full Gene Name: fast skeletal myosin light chain 2 Synonyms: DKFZp779C0757,MGC13450,MRLC2
Gene ID:	29895
Pathways:	Myometrial Relaxation and Contraction

Application Details

Application Notes:	Optimal working dilution should be determined by the investigator.
Comment:	Preparation method: in vitro, wheat germ expression system Product Quality tested by: 12.5% SDS-PAGE Stained with Coomassie Blue.
Restrictions:	For Research Use only

Handling

Buffer:	50 mM Tris-HCl, 10 mM reduced Glutathione, pH =8.0 in the elution buffer.
Handling Advice:	Aliquot to avoid repeated freezing and thawing.
Storage:	-80 °C
Storage Comment:	Best use within three months from the date of receipt of this protein.

Images

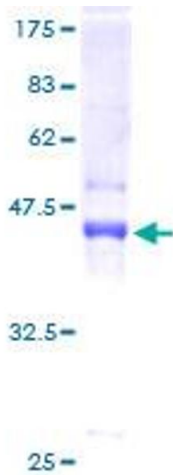


Image 1.